



43 Ruth Drive Lenah Valley TAS

4  2  1 

This expansive 4-bedroom family home is well located in one of the suburb of Lenah Valleys most highly sought streets.

This property is bathed in all-day sunshine, with views on display from its multiple living areas, they include the Derwent estuary and surrounding suburbs, all simply superb.

The design of this executive home is enhanced by the perfect positioning of all windows, particularly that of the kitchen, which was professionally engineered to provide seamless, unrestricted views, whilst offering relative privacy and fabulous light filtration.

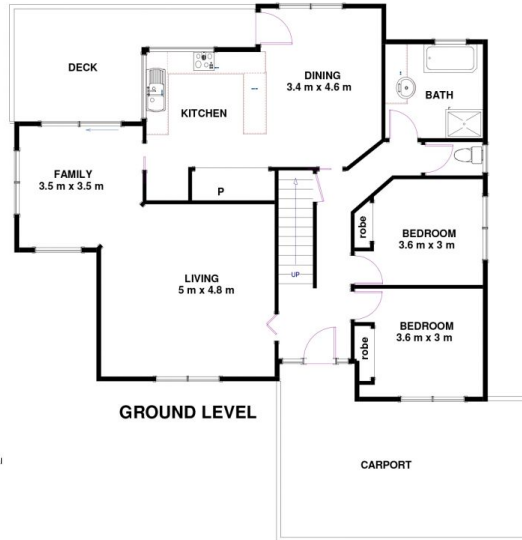
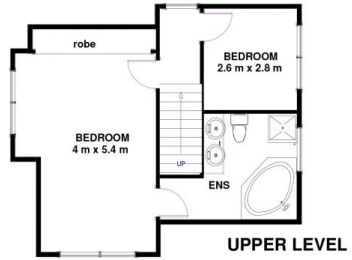
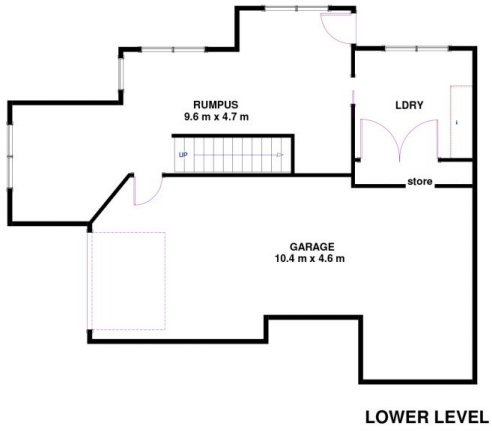
Built over 3 levels including downstairs, complete with spacious rumpus room, laundry and an as yet undeveloped

Price : \$ 700,000
Building Size : 239 sqm
Land Size : 653 sqm
View : <https://www.lennardmclure.com.au/sale/tas/hobart-southern/lenah-valley/residential/house/5923791>



John Lennard
6169 2555

43 Ruth Dr, Lenah Valley TAS 7008
Approx internal Space 239 sqm



Disclaimer: All measurements and floor plan details are for informational purposes only. We make no warranties or representations, express or implied, as to the accuracy of this rendering. Independent property size verification is recommended. The approximate internal area measurement does not directly reflect the government evaluation of the property area.