



392 Argyle Street North Hobart TAS

3  1  2 

Facing North-East and located within a few minutes walking distance of The Friends School, this striking period home boasts a bird's eye view of North Hobart oval plus scenic vista over glebe, Derwent Estuary and Eastern Shore suburbs.

The home itself offers 3 bedrooms, extremely spacious living room and a stylishly upgraded kitchen and dining area. There are solar panels on the roof above and an expansive area under, this area was previously utilised as a studio and teenage sleeping quarters.

There is an array of period features such as lead light windows fire surrounds and Tassie oak floorboards.

The rear private terraced and paved gardens are steeped in solitude and enchantment.

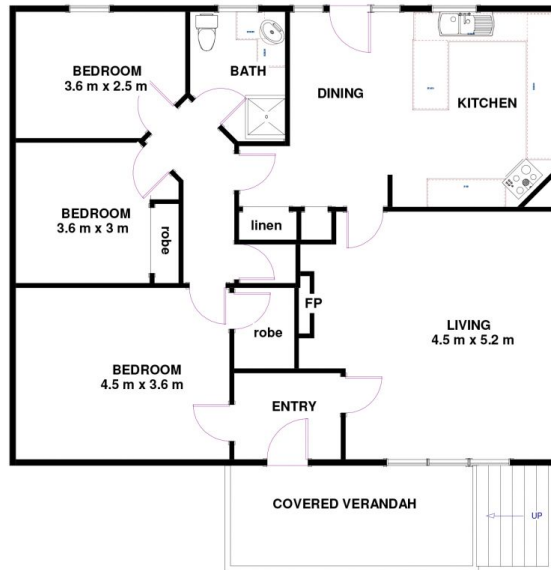
There is also off-street parking accessed via Carr Street.

Price : \$ 622,000
Building Size : 129 sqm
Land Size : 674 sqm
View : <https://www.lennardmclure.com.au/sale/tas/hobart-southern/north-hobart/residential/house/5923795>



John Lennard
6169 2555

392 Argyle St, North Hobart TAS 7000
Approx Internal Space 129 sqm



Disclaimer: All measurements and floor plan details are for informational purposes only. We make no warranties or representations, express or implied, as to the accuracy of this rendering. Independent property size verification is recommended. The approximate internal area measurement does not directly reflect the government evaluation of the property area.