






34 Ogilvie Street Mount Stuart TAS

4  2  5 

Well located in one of Hobart's most highly sought after inner suburbs, under a 10 minute drive from the CBD and close to a host of schools and services, this north facing, architect-designed 4 bedroom double brick home boasts a unique style for its 1980s era. Features include: high ceilings, exotic pine framed windows, exclusive clerestory elevated windows ideal for increasing natural light and passive solar heating.

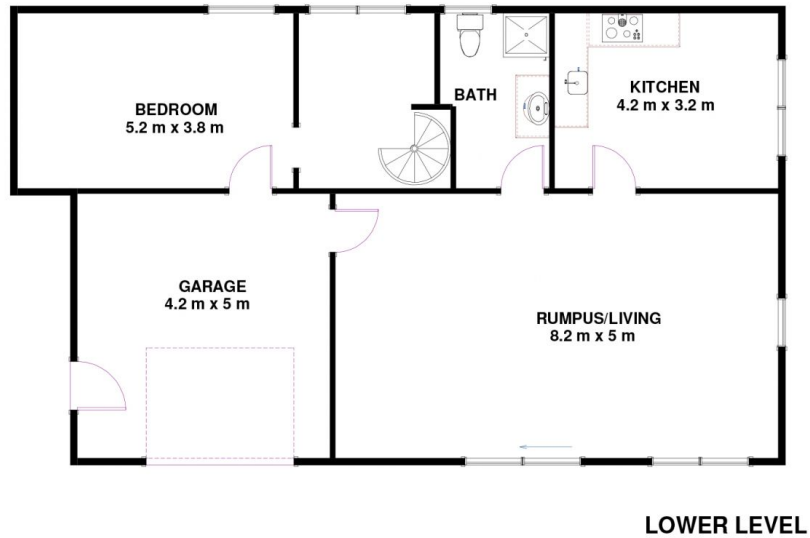
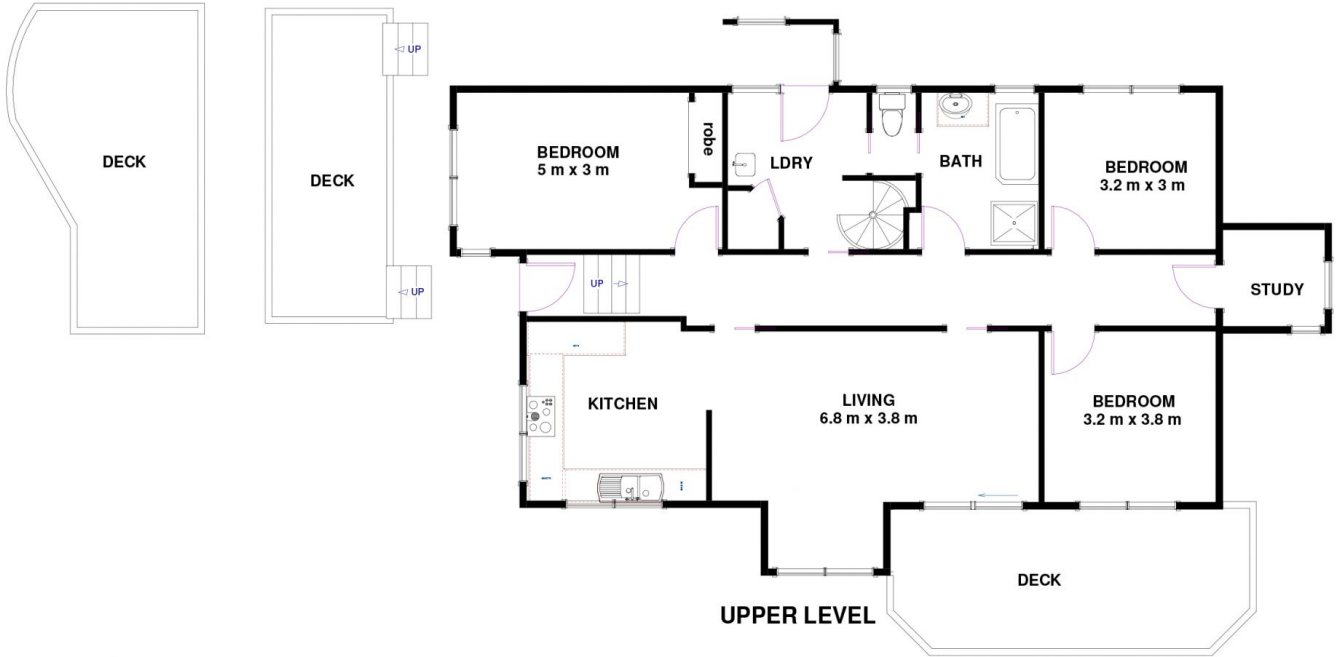
Boasting fabulous estuary, forest and suburban views, built over two levels on an expansive double parcel of land totalling 1404m in all, the setting in a prime position, on a quiet no-through street backing onto Knocklofty reserve is seen as ideal and serene. The grounds boast an array of thriving fruit trees, including apple, pear, plum, peach, nectarine and walnut. Native and introduced plants are in abundance. There is also available off-street parking for a

Land Size : 1404 sqm
View : <https://www.lennardmclure.com.au/sale/tas/hobart-southern/mount-stuart/residential/home/5923798>



John Lennard
6169 2555

34 Ogilvie St, Mount Stuart TAS 7000
Approx Internal Space 226 sqm (inc garage)



Disclaimer: All measurements and floor plan details are for informational purposes only. We make no warranties or representations, express or implied, as to the accuracy of this rendering. Independent property size verification is recommended. The approximate internal area measurement does not directly reflect the government evaluation of the property area.