



7 Stafford Court West Moonah TAS

6  3  12 

Well located in the ever-popular suburb of West Moonah, within a short drive of vibrant Moonah Central, close to transport and all within around 9km of Hobart City. This superb property is not only spacious to the extreme, it also would ideally suit dual family occupancy or partial use as short stay accommodation.

Set on a land parcel of approximately 2500M2 this expansive versatile home has so much to offer. Built over 2 levels with up to 6 bedrooms, 3 bathrooms, 2 kitchens, 2 laundries plus storage and garage areas remodelled and now utilised as a giant rumpus and music rooms, boasting some 370m2 of living in all.

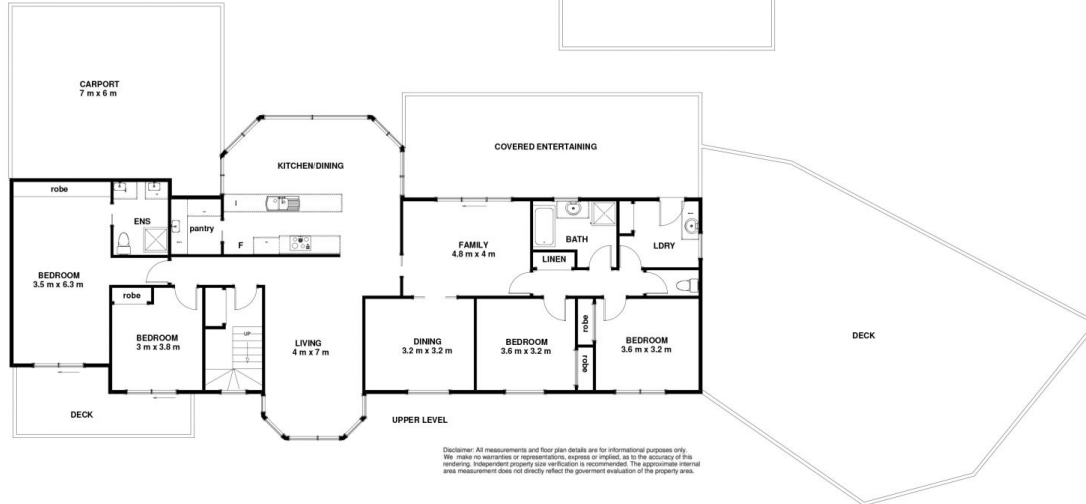
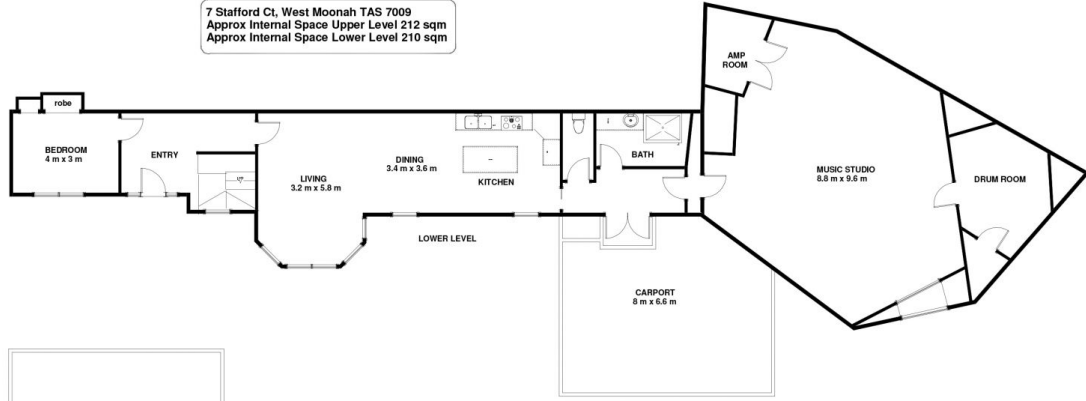
This fabulous home faces due north, radiates from all day sunshine and captures extraordinary 180-degree views, following our magnificent Derwent Estuary from its northern

Building Size : 370 sqm
Land Size : 2563 sqm
View : <https://www.lennardmclure.com.au/sale/tas/hobart-southern/west-moonah/residential/house/5923812>



John Lennard
6169 2555

7 Stafford Ct. West Moonah TAS 7009
Approx Internal Space Upper Level 212 sqm
Approx Internal Space Lower Level 210 sqm



Disclaimer: All measurements and floor plan details are for informational purposes only. We make no warranties or representations, express or implied, as to the accuracy of this rendering. Independent property size verification is recommended. The approximate internal area measurement does not directly reflect the government evaluation of the property area.