



**1/27 Walgett Place Glenorchy TAS**

2  1  2 

This Stand-Alone two-bedroom villa is situated in one of the suburb of Glenorchy's most highly regarded and tightly held no-through streets. It is one of only two on the block (The second being owner occupied).

This property offers level access, a practical well-thought-out floor plan, mains gas connection, parking for 2 vehicles and a low maintenance easy care garden. There is a solid long standing tenancy in place with a current rental income of \$300 per week.

The location is ultra-convenient within an easy distance of the Glenorchy business hub, major supermarkets, restaurants, retail shopping, banks, doctors, transport and all services are close at hand.

**Price** : \$ 300,000  
**Building Size** : 77 sqm  
**View** : <https://www.lennardmclure.com.au/sale/tas/hobart-southern/glenorchy/residential/villa/5923813>

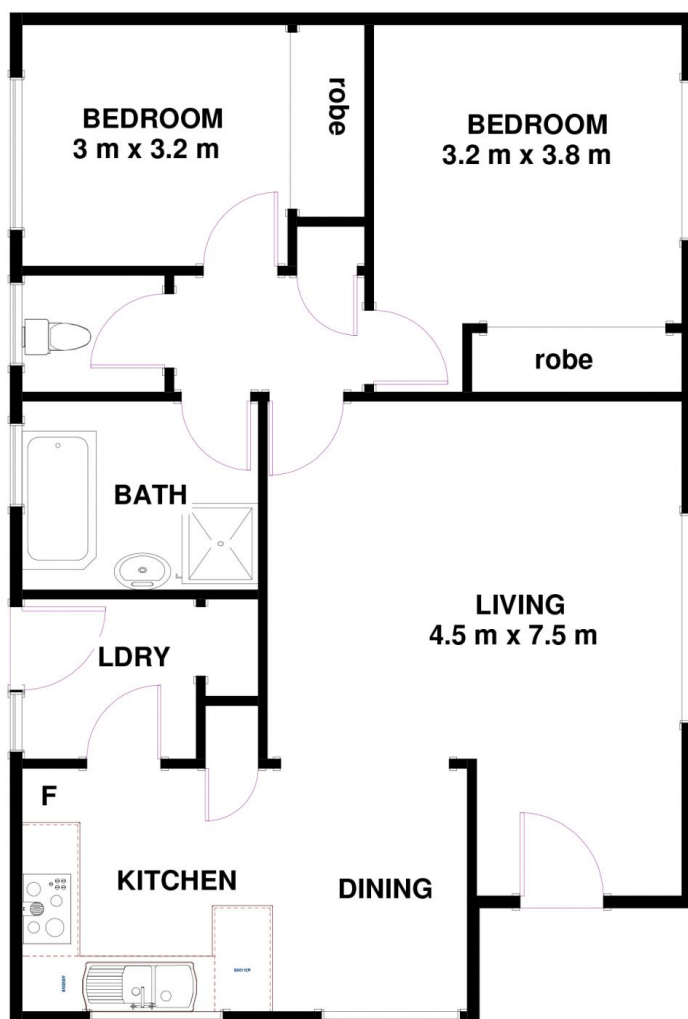


**John Lennard**  
6169 2555



**Johnnie Lennard**  
6169 2555

**1/27 Walgett PI Glenorchy TAS 7010**  
**Approx Internal Space 77 sqm**



Disclaimer: All measurements and floor plan details are for informational purposes only. We make no warranties or representations, express or implied, as to the accuracy of this rendering. Independent property size verification is recommended. The approximate internal area measurement does not directly reflect the government evaluation of the property area.