



35 Melville Street Hobart TAS

Zoned commercial and situated in the inner-city precinct of The Hobart City, within two streets of the very centre of town, surrounded by what is soon to become Tasmania's premier education strip courtesy of the relocation of the university of Tasmania.

This property is built over two levels and consists of some 13 offices, boardroom, male and female restrooms, dual waiting areas and 2 kitchenettes. Approximately half of the property is tenanted with the remainder being owner business occupied.

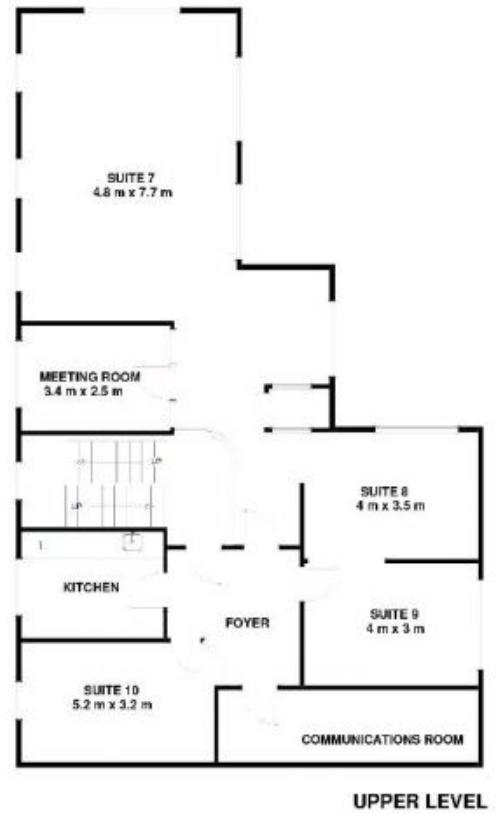
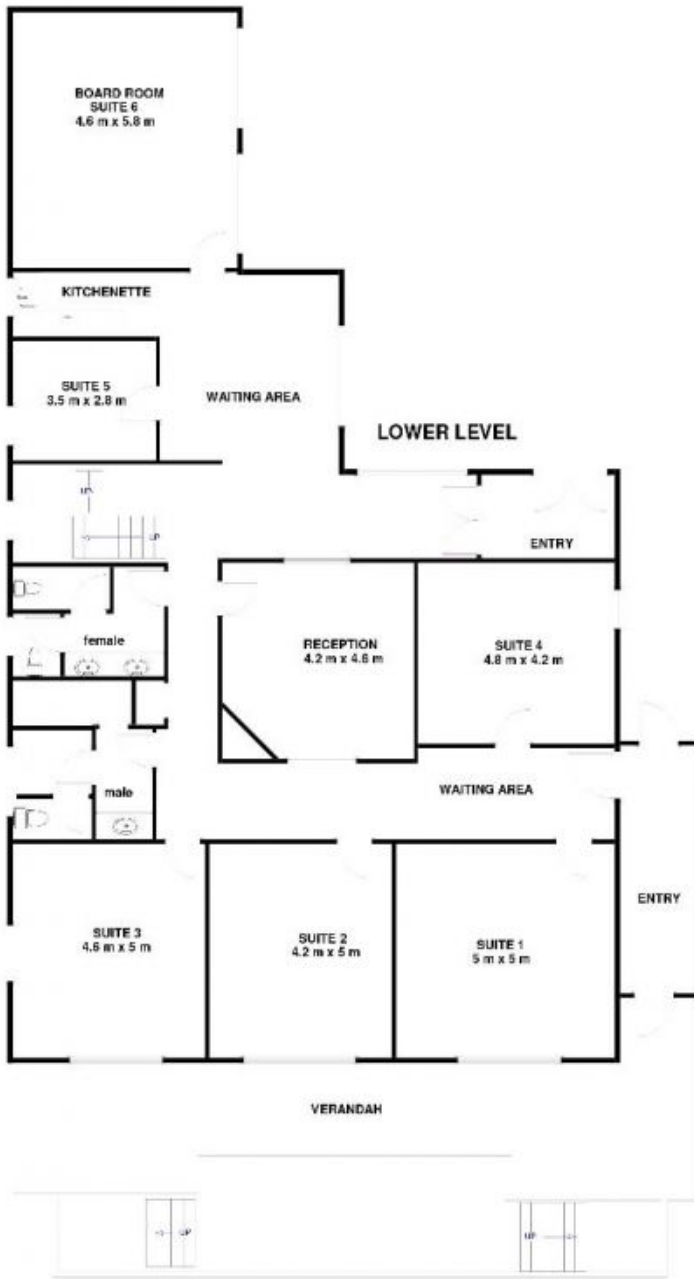
The jewel in the crown is an easily accessed 17 space carpark, spaces such as this are becoming almost unattainable within such a close proximity to the very centre of the CBD.

Building Size : 320 sqm
Land Size : 809 sqm
View : <https://www.lennardmclure.com.au/sale/tas/hobart-southern/hobart/commercial/offices/5923814>



John Lennard
6169 2555

35 Melville St Hobart TAS 7000
Approx Internal Space 320 sqm



Disclaimer: All measurements and floor plan details are for informational purposes only. We make no warranties or representations, express or implied, as to the accuracy of the rendering. Independent property size verification is recommended. The approximate internal area measurement does not directly reflect the government valuation of the property area.