



**70 Highfield Street Moonah TAS**

3  2  4 

Beautifully built, this 1970's family home boasts three bedrooms, expansive formal lounge, amazing retro kitchen and an open spacious dining area.

Down the Tassie oak staircase there is a fully functioning second kitchen, massive rumpus room, second bathroom, storage area and double garage/workshop complete with 2 roller doors, over 220 m2 in all.

This outstanding home is so original. It boasts a host of 1970's features including high-grade Tassie oak floors, original wool carpets, classic 70's light fittings and timber doors

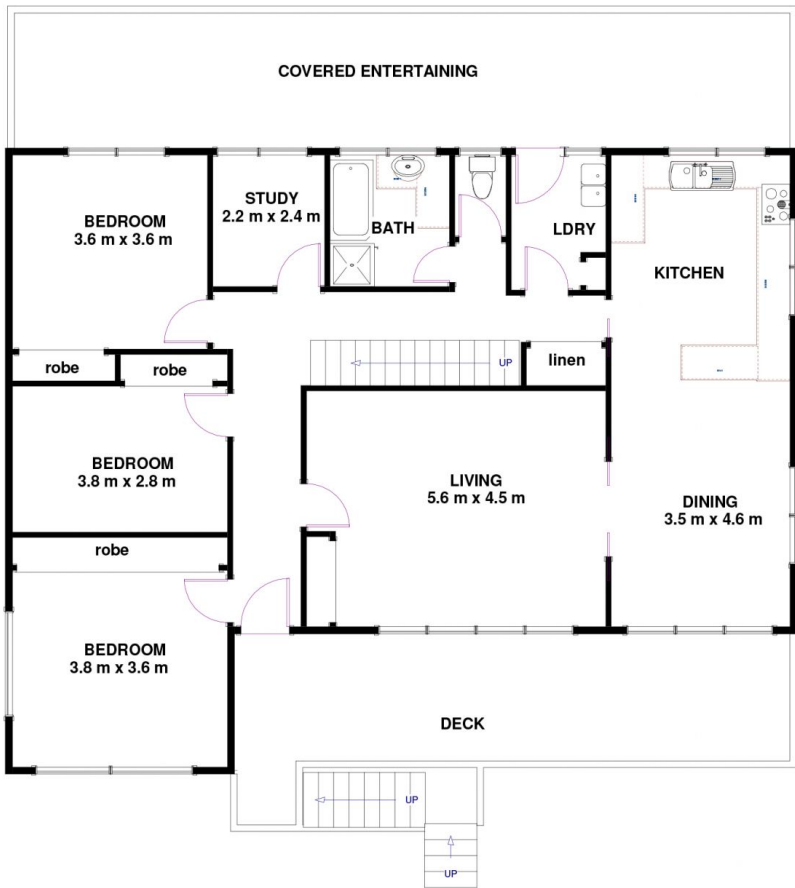
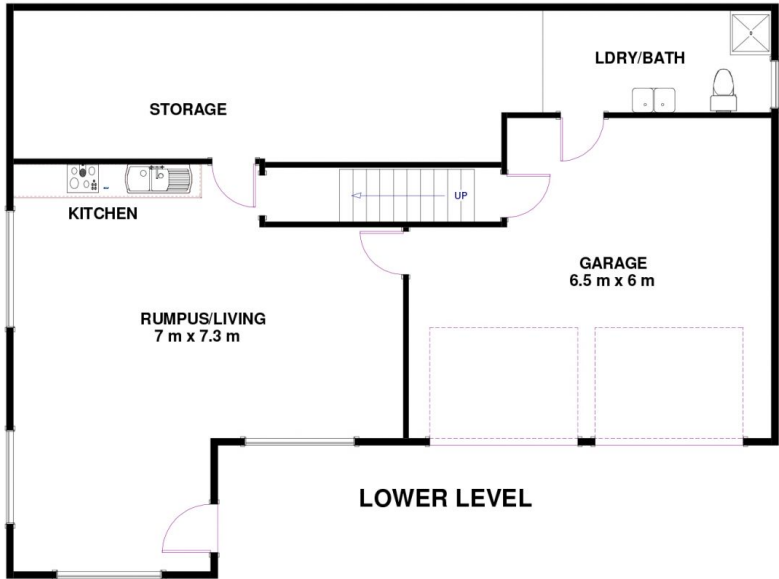
The panoramic views are simply superb. They include a wonderful aspect of Mount Wellington, three separations of the Derwent Estuary, multiple Hobart suburbs and many of

**Building Size** : 224 sqm  
**Land Size** : 668 sqm  
**View** : <https://www.lennardmclure.com.au/sale/tas/hobart-southern/moonah/residential/house/5923818>



**John Lennard**  
6169 2555

70 Highfield St Moonah TAS 7009  
Approx Internal Space 224 sqm



Disclaimer: All measurements and floor plan details are for informational purposes only. We make no warranties or representations, express or implied, as to the accuracy of this rendering. Independent property size verification is recommended. The approximate internal area measurement does not directly reflect the government evaluation of the property area.