



1/1 Plimsoll Place Sandy Bay TAS

1  1  1 

Located just off Sandy Bay Road, within a short distance from supermarkets, restaurants, cafes, transport and services, with a beach across the road and University of Tasmania close by this beautifully appointed, one-bedroom apartment, is currently returning a gross income of \$35,000 per annum.

Whilst currently utilised as short-term accommodation, this property will also suit first home buyers wishing to gain a prime foothold within one of Hobart most prestigious city seaside suburbs.

The vendor is also willing to negotiate a sale price including all or some furnishings.

Price : \$ 343,000
Building Size : 36 sqm
Land Size : 36 sqm
View : <https://www.lennardmclure.com.au/sale/tas/hobart-southern/sandy-bay/residential/unit/5923819>

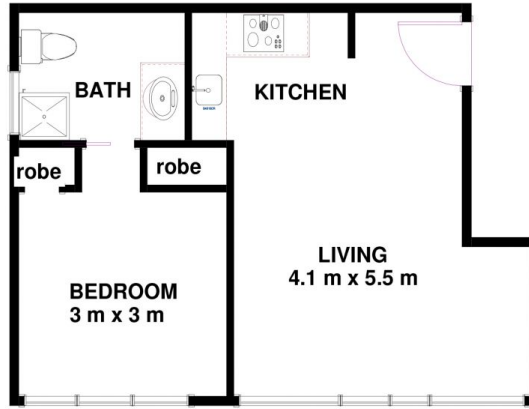


John Lennard
6169 2555



Johnnie Lennard
6169 2555

Unit 1/1 Plimsoll Pl Sandy Bay TAS 7005
Approx Internal Space 36 sqm



Disclaimer: All measurements and floor plan details are for informational purposes only. We make no warranties or representations, express or implied, as to the accuracy of this rendering. Independent property size verification is recommended. The approximate internal area measurement does not directly reflect the government evaluation of the property area.