



12 Wendover Place New Town TAS

3  1  3 

This substantially upgraded, three-bedroom, family home will suit all age groups.

Located on an internal parcel of land accessed via a leafy quiet cul-de-sac and all within minutes of two major supermarkets, close to a host of private and public schools and within easy walking distance of North Hobart.

The home itself has had most of the ordinary windows replaced with quality double glazed windows and consists of multiple fabulous indoor living areas, entertainment decks and three good sized bedrooms including the palatial master.

This kitchen boasts quality European appliances and is perfectly located to cater for both indoor and outdoor entertaining.

The bathroom fit-out is also of a high standard and a

Price : \$ 810,000
Building Size : 150 sqm
Land Size : 1072 sqm
View : <https://www.lennardmclure.com.au/sale/tas/hobart-southern/new-town/residential/house/5923830>

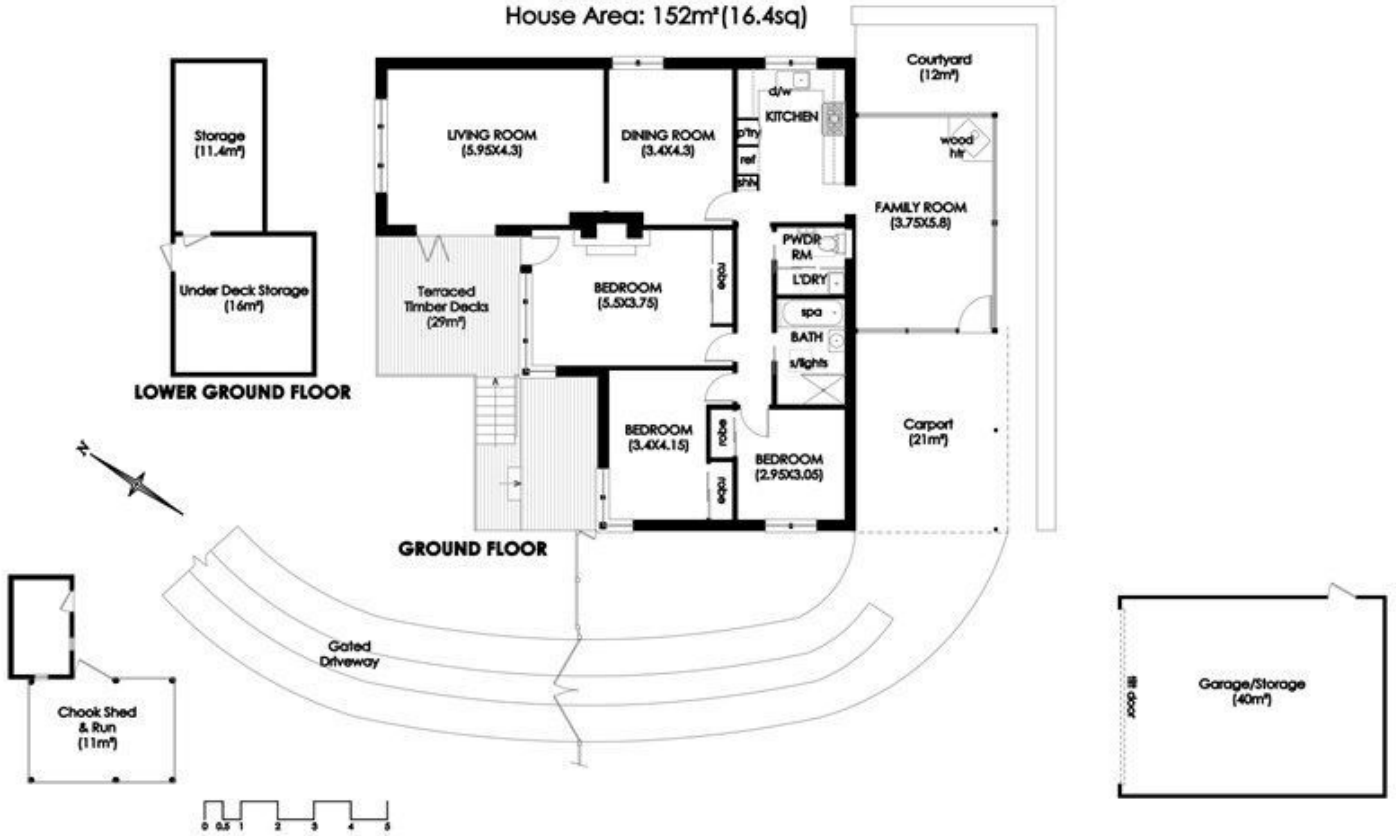


John Lennard
6169 2555



Johnnie Lennard
6169 2555

NEW TOWN
 12 Wendover Place
 House Area: 152m² (16.4sq)



IMPORTANT: measurements are approximate-interested parties need to verify