



2 Burge Place Herdsmans Cove TAS

3  1  1 

Located around 2- minutes from the Hobart CBD this low maintenance brick veneer home is securely let currently returning \$285 per week soon to increase to \$325 per week.

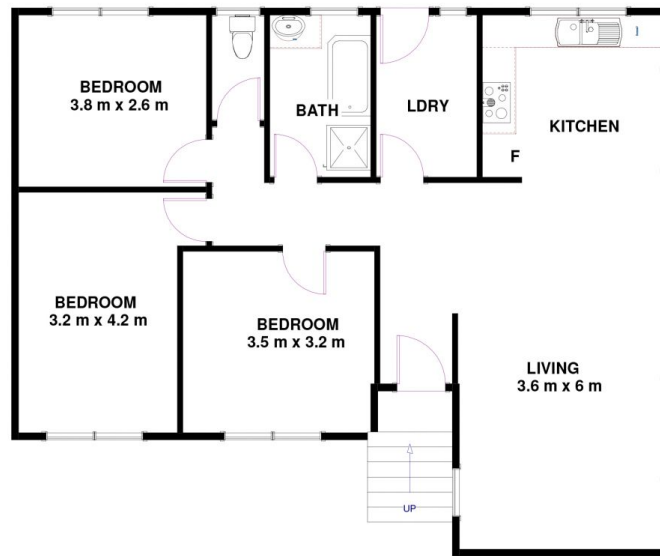
Constructed on one level of low maintenance brick veneer, this home has undergone a relatively recent upgrade, shopping centres, food outlets and many services are around just a 5-minute drive away.

Price : \$ 225,000
Building Size : 97 sqm
Land Size : 663 sqm
View : <https://www.lennardmclure.com.au/sale/tas/hobart-southern/herdsmans-cove/residential/house/5923831>



Johnnie Lennard
 6169 2555

2 Burge Pl Herdsmans Cove TAS 7030
Approx Internal Space 97 sqm



Disclaimer: All measurements and floor plan details are for informational purposes only. We make no warranties or representations, express or implied, as to the accuracy of this rendering. Independent property size verification is recommended. The approximate internal area measurement does not directly reflect the government evaluation of the property area.