





63 School Road Sandford TAS

1  6 

Located around a 25 minute drive from Hobart's C.B.D, this property is an amazing example of period architecture, blending in total harmony, with stylish out of the ordinary, ultra-modern construction.

Originally built at the turn of the 19th century as a school to service the local community and then extended in the early 1950's, now displaying its fabulous current guise.

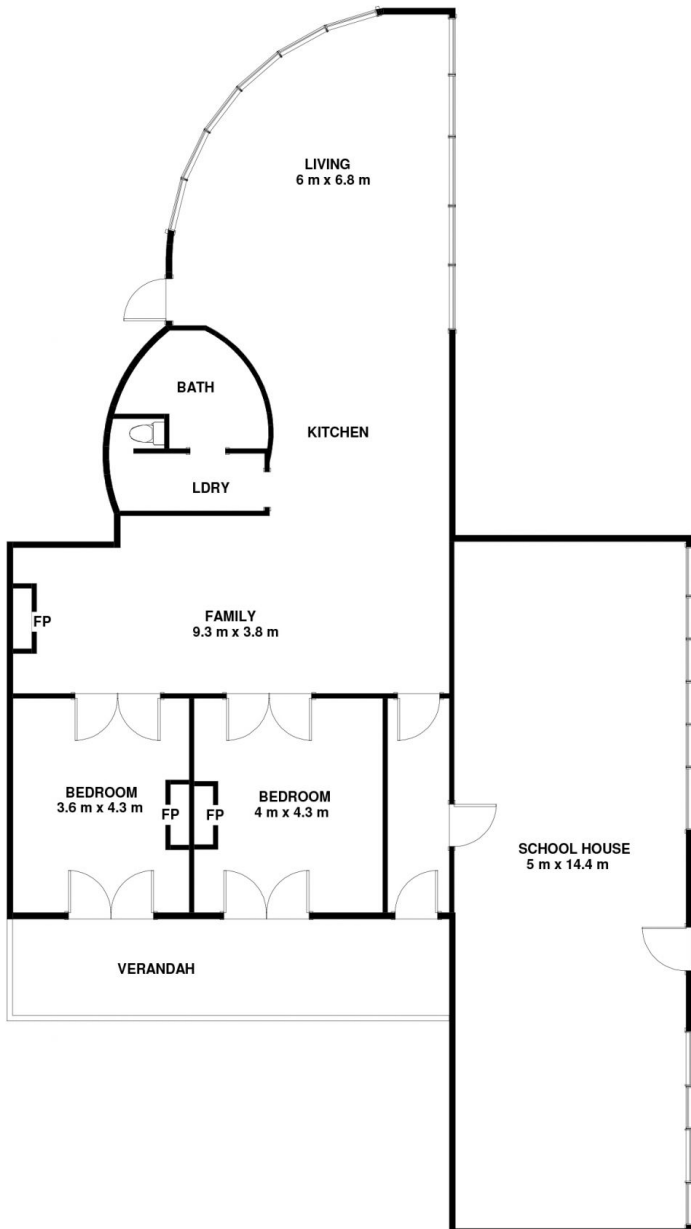
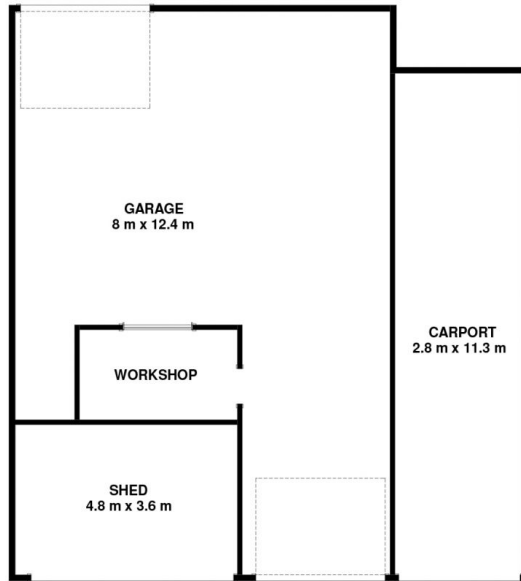
Land Size : 0.3949 ha

View : <https://www.lennardmclure.com.au/sale/tas/hobart-southern/sandford/residential/house/5923838>



John Lennard
6169 2555

63 School Rd Sandford TAS 7020
Approx Internal Space 242 sqm



Disclaimer: All measurements and floor plan details are for informational purposes only. We make no warranties or representations, express or implied, as to the accuracy of this rendering. Independent property size verification is recommended. The approximate internal area measurement does not directly reflect the government evaluation of the property area.