






**50 Rosehill Crescent Lenah Valley TAS**

3  2  4 

This amazing lifestyle home really has the X Factor in spades. Not only does it enjoy possibly the best position in such a highly regarded Lenah Valley Street, it also offers diverse and interesting views from Mount Wellington to Derwent estuary and both Eastern and Western shore suburbs it radiates from a sunny northerly aspect, this is often sought and rarely found. The near level land parcel is twice the size of current suburban offering.

The design is ideal for those wishing to entertain in any weather, the sheer size of the well-connected entry level living complete with ducted under floor air conditioning bar and powder room is sensational, it also opens to a perfectly positioned covered deck, designed to channel a cooling breeze when required.

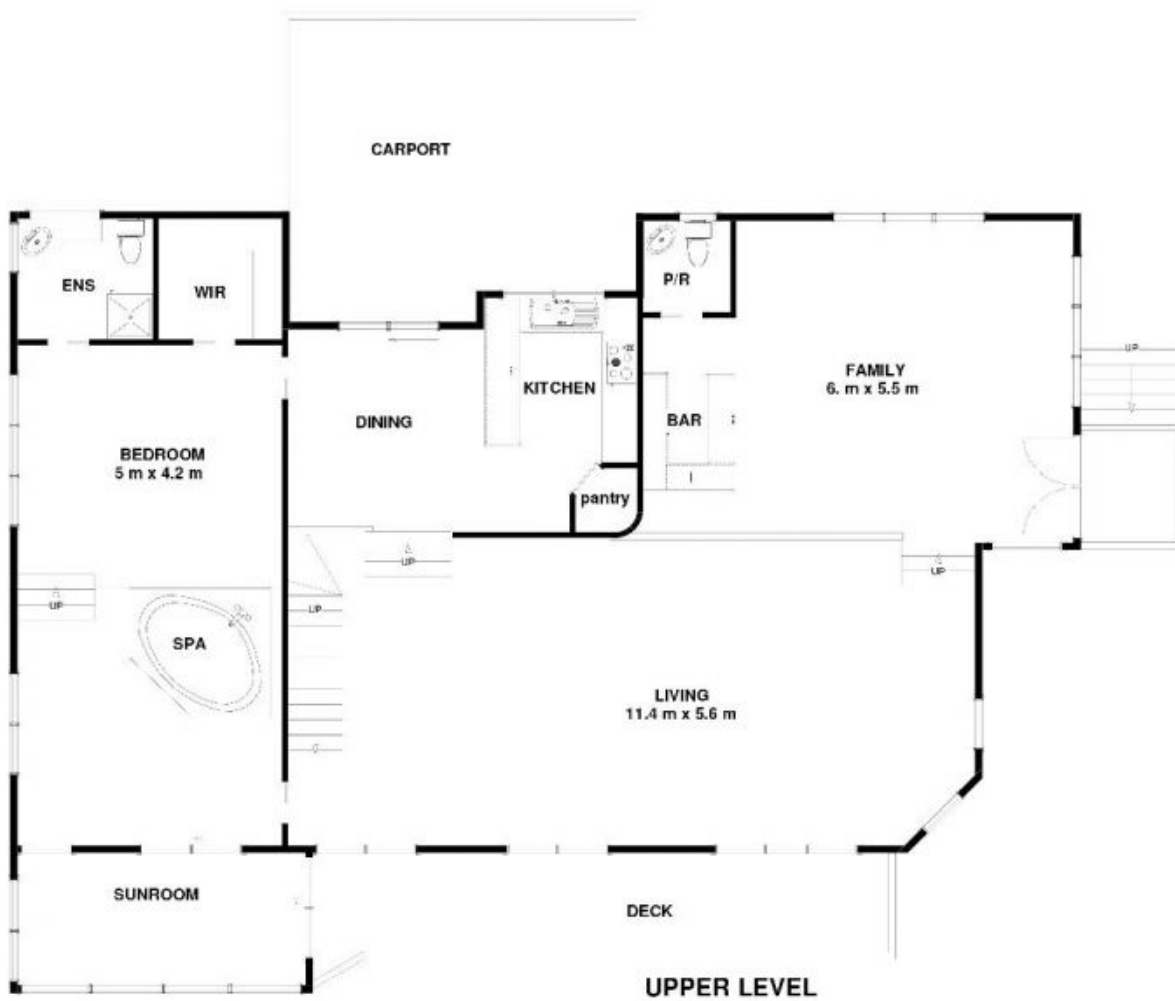
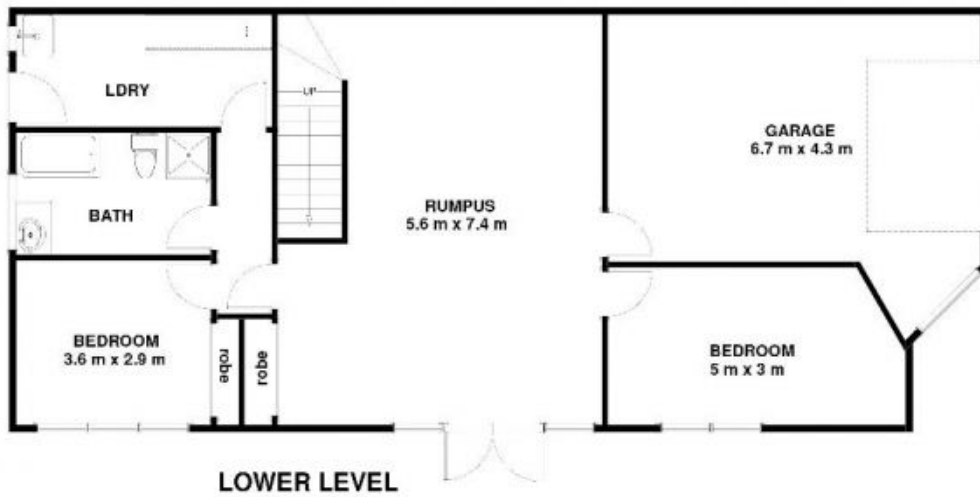
The stylish master bedroom is also situated at entry level

**Building Size** : 293 sqm  
**Land Size** : 1174 sqm  
**View** : <https://www.lennardmclure.com.au/sale/tas/hobart-southern/lenah-valley/residential/house/5923839>



**John Lennard**  
**6169 2555**

50 Rosehill Cres Lenah Valley TAS 7008  
Approx Internal Space 293 sqm



Disclaimer: All measurements and floor plan details are for informational purposes only. We make no warranties or representations, express or implied, as to the accuracy of this rendering. Independent property size verification is recommended. The approximate internal area measurement does not directly reflect the government evaluation of the property area.