






**285A Lenah Valley Road Lenah Valley TAS**

5  3  3 

This spacious family home is situated in the highly sought suburb of Lenah valley occupying an ideal setting within around a 12-minute drive of Hobarts CBD.

Boasting outstanding accommodation with 5 bedrooms on offer, well located generous living areas on both levels all serviced by 3 bathrooms and 2 powder rooms. There is also an expansive garage workshop and secure parking for several vehicles.

It is hard to believe that a property such as this exists within such a close proximity of transport, shops, cafes, private and public schools.

There are multiple reserves including one across the road, adjoining the lady Franklin museum, with another just a stone's throw of the back door. The Lenah Valley rivulet

**Price** : \$ 575,000  
**Building Size** : 262 sqm  
**Land Size** : 564 sqm  
**View** : <https://www.lennardmclure.com.au/sale/tas/hobart-southern/lenah-valley/residential/house/5923843>

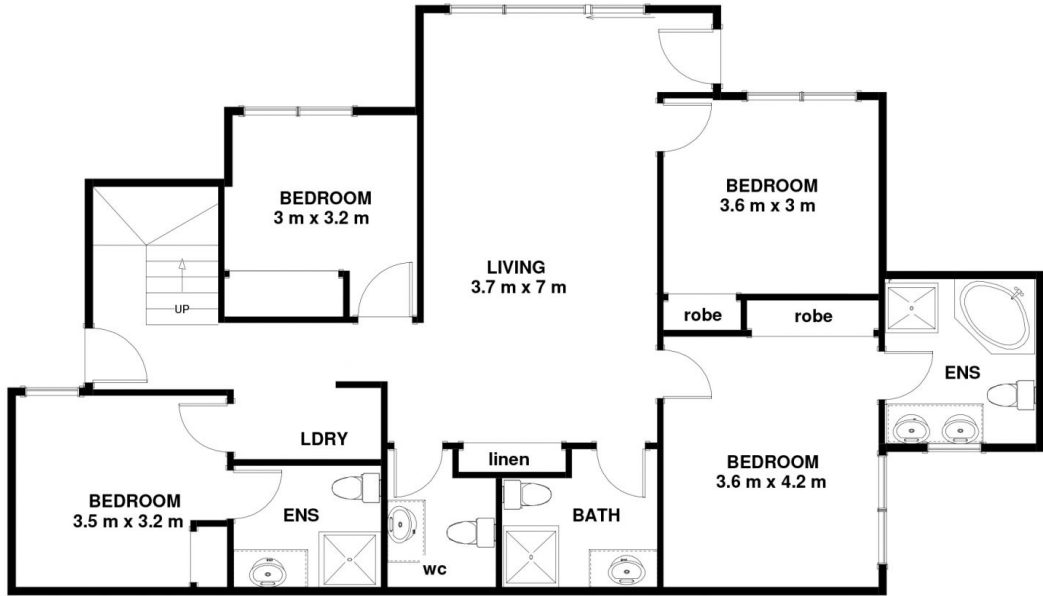


**John Lennard**  
6169 2555

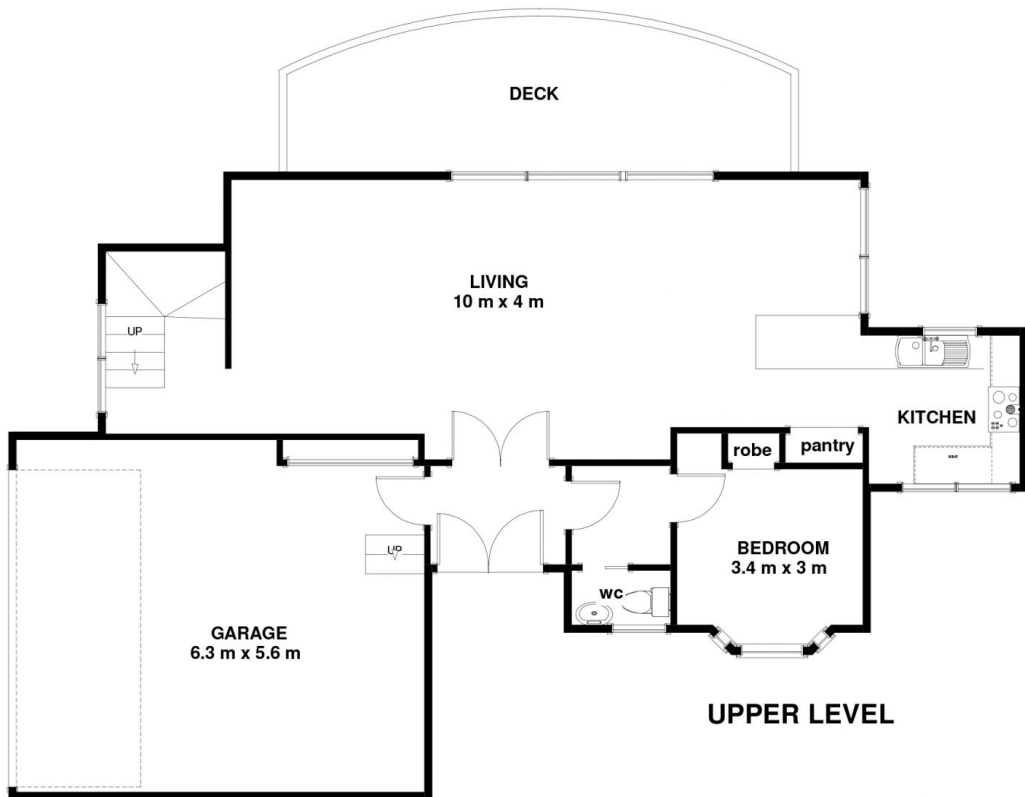


**Johnnie Lennard**  
6169 2555

285A Lenah Valley Rd Lenah Valley TAS 7008  
Approx Internal Space 262 sqm



LOWER LEVEL



UPPER LEVEL

Disclaimer: All measurements and floor plan details are for informational purposes only. We make no warranties or representations, express or implied, as to the accuracy of this rendering. Independent property size verification is recommended. The approximate internal area measurement does not directly reflect the government evaluation of the property area.