



5 Hudson Court Lenah Valley TAS

3  1  3 

When size matters, this home comes with a built-in superannuation package - well the land size of 1728m2 (approx.) certainly suggests that STCA, a unit can be built in the rear yard. Buy now and reap the rewards of the potential of an additional block-home in the future.

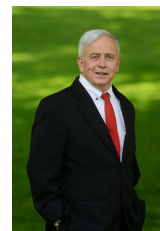
Set high up in a quiet cul-de-sac, this well constructed and maintained brick and tile three-bedroom home has commanding views of Mount Wellington and delightful water glimpses of the River Derwent.

The extensive rear yard not only offers a huge amount of space for children and pets, but it is also a veritable leafy rural oasis; complete with over twenty-five fruit-bearing trees. The home offers a formal open plan lounge and dining and off the kitchen family area, there is a large three-sided glass informal sunny conservatory style retreat,

Price : \$ 515,000
Building Size : 129 sqm
Land Size : 1728 sqm
View : <https://www.lennardmclure.com.au/sale/tas/hobart-southern/lenah-valley/residential/house/5923847>

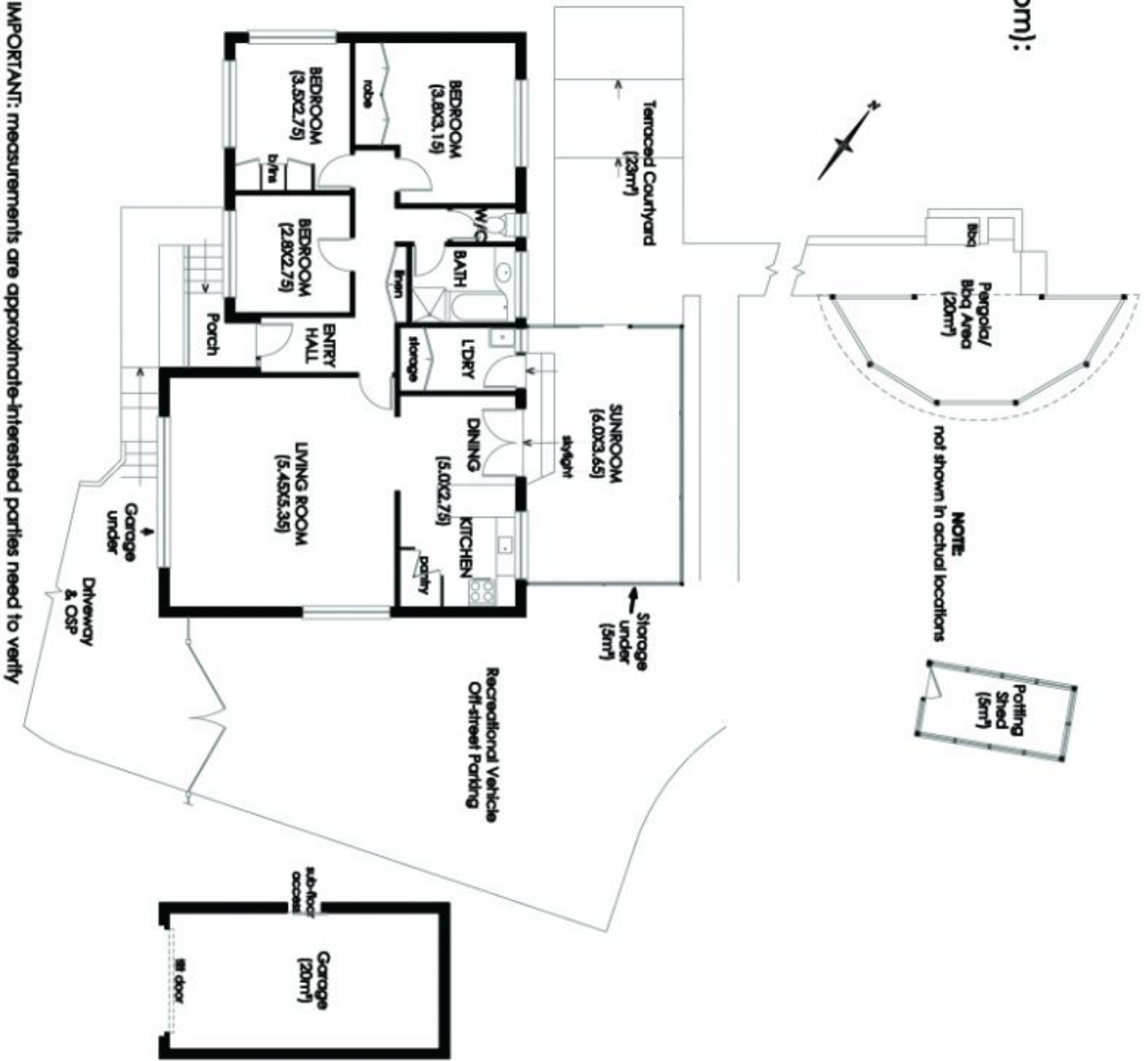


Debbie Burgess
6169 2555



Kim Herbert
6169 2555

LENAH VALLEY
5 Hudson Court
House Area (incl Sunroom):
129m²(13.9sq)



IMPORTANT: measurements are approximate-interested parties need to verify