



1/11 Solana Place Sandy Bay TAS

4  2  2 

Well located in a no-through street and build over two levels. Accessed via one of Sandy Bay's most prestigious avenues and within relatively close proximity of the University of Tasmania, a host of public and private schools, sports grounds and transport, Lipscombe Larder and major supermarkets are just a short drive away.

This substantial townhouse boasts an expansive living area, four spacious bedrooms and two bathrooms (one on each level).

The home also offers a double garage workshop, something that is often unattainable in properties of this type.

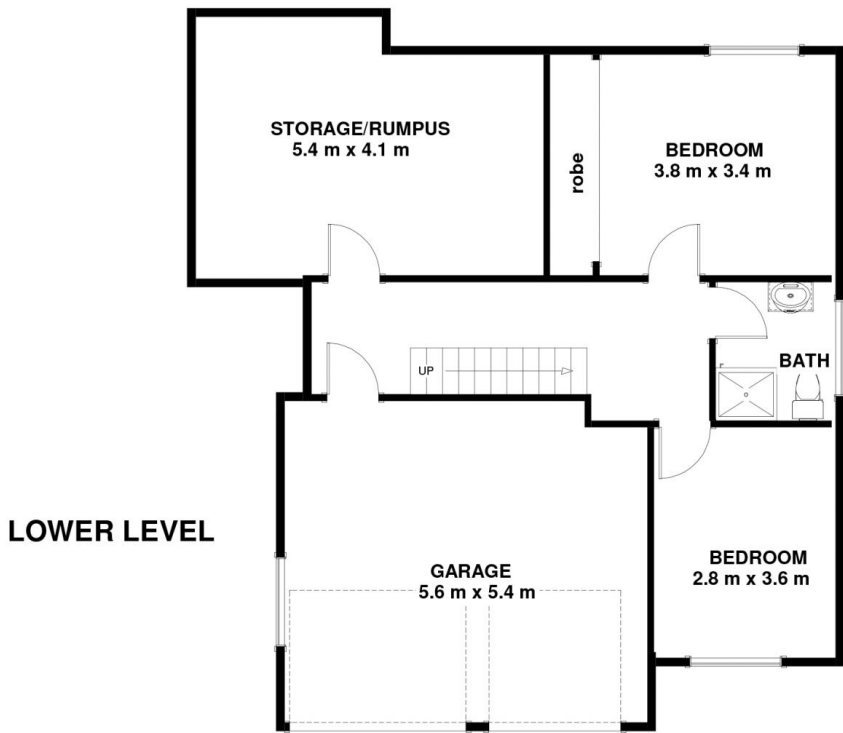
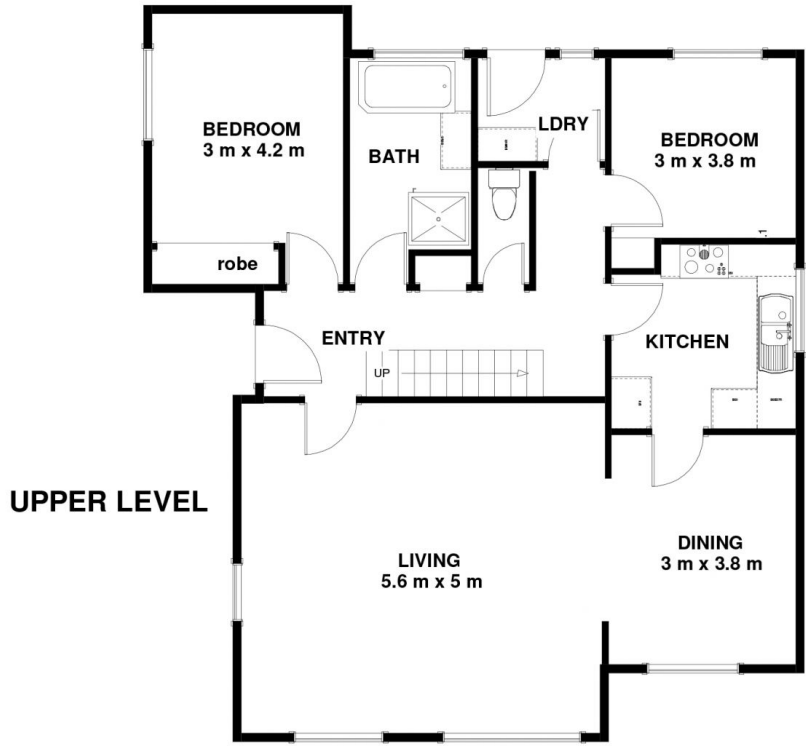
Benefitting from lovely mountain views and a North-Westerly aspect this home radiates warmth.

Price : \$ 590,000
Building Size : 136 sqm
Land Size : 225 sqm
View : <https://www.lennardmclure.com.au/sale/tas/hobart-southern/sandy-bay/residential/unit/5923852>



John Lennard
6169 2555

1/11 Solana PISandy Bay TAS 7005
Approx Internal Space 136 sqm



Disclaimer: All measurements and floor plan details are for informational purposes only. We make no warranties or representations, express or implied, as to the accuracy of this rendering. Independent property size verification is recommended. The approximate internal area measurement does not directly reflect the government evaluation of the property area.