



1/118 Strickland Avenue South Hobart TAS

2  1  2 

Boasting a sunny north westerly aspect with spectacular mountain views, located in the ever-popular 'Green Belt Precinct' of South Hobart, this character home has so much to offer. Loaded with period features such as exotic timber three-panel doors, Tassie Oak hardwood floors, timber-paneled ceilings and sensational pine windows (possibly Kingbilly).

Recent upgrades include the rejuvenated well-located kitchen, plus the spacious and stylish bathroom.

The generous open living area offers both a reverse cycle heat pump and a standalone wood-heater. The well-proportioned master bedroom is perfectly positioned to capture the same exhilarating mountain panorama on offer as displayed from the living area. The property offers off-street parking for two cars within just meters of the back

Price : \$ 485,000
Building Size : 63 sqm
Land Size : 402 sqm
View : <https://www.lennardmclure.com.au/sale/tas/hobart-southern/south-hobart/residential/villa/5923865>

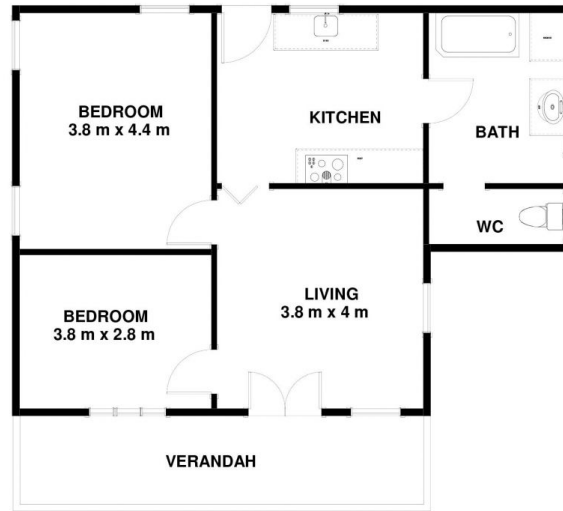


John Lennard
6169 2555



Johnnie Lennard
6169 2555

Villa 1 /118 Strickland Ave South Hobart TAS 7004
Approx Internal Space 63 sqm



Disclaimer: All measurements and floor plan details are for informational purposes only. We make no warranties or representations, express or implied, as to the accuracy of this rendering. Independent property size verification is recommended. The approximate internal area measurement does not directly reflect the government evaluation of the property area.