



591 Nelson Road Mount Nelson TAS

4  2  2 

Well situated on the flat, in the leafy precinct of mount nelson, around an 8-minute drive of Hobart's CBD and close to a council-maintained recreation reserve, sandy bay shopping, Utas and a host of private and public schools. This substantially-upgraded recently extended family home offers a generous land parcel, level access, sun-soaked open living with 4 bedrooms and 2 bathrooms.

This home has to be inspected to be appreciated its street appeal definitely does not do it justice. It will suit any age group, there are no stairs to negotiate and a bus stop is situated within approximately 30 meters of the front door. With filtered views of the suburb of Bellerive, Blunstone arena and Derwent estuary (spectacular at night) on offer this home is sure to surprise.

Price : \$ 631,500
Building Size : 146 sqm
Land Size : 789 sqm
View : <https://www.lennardmclure.com.au/sale/tas/hobart-southern/mount-nelson/residential/house/5923866>

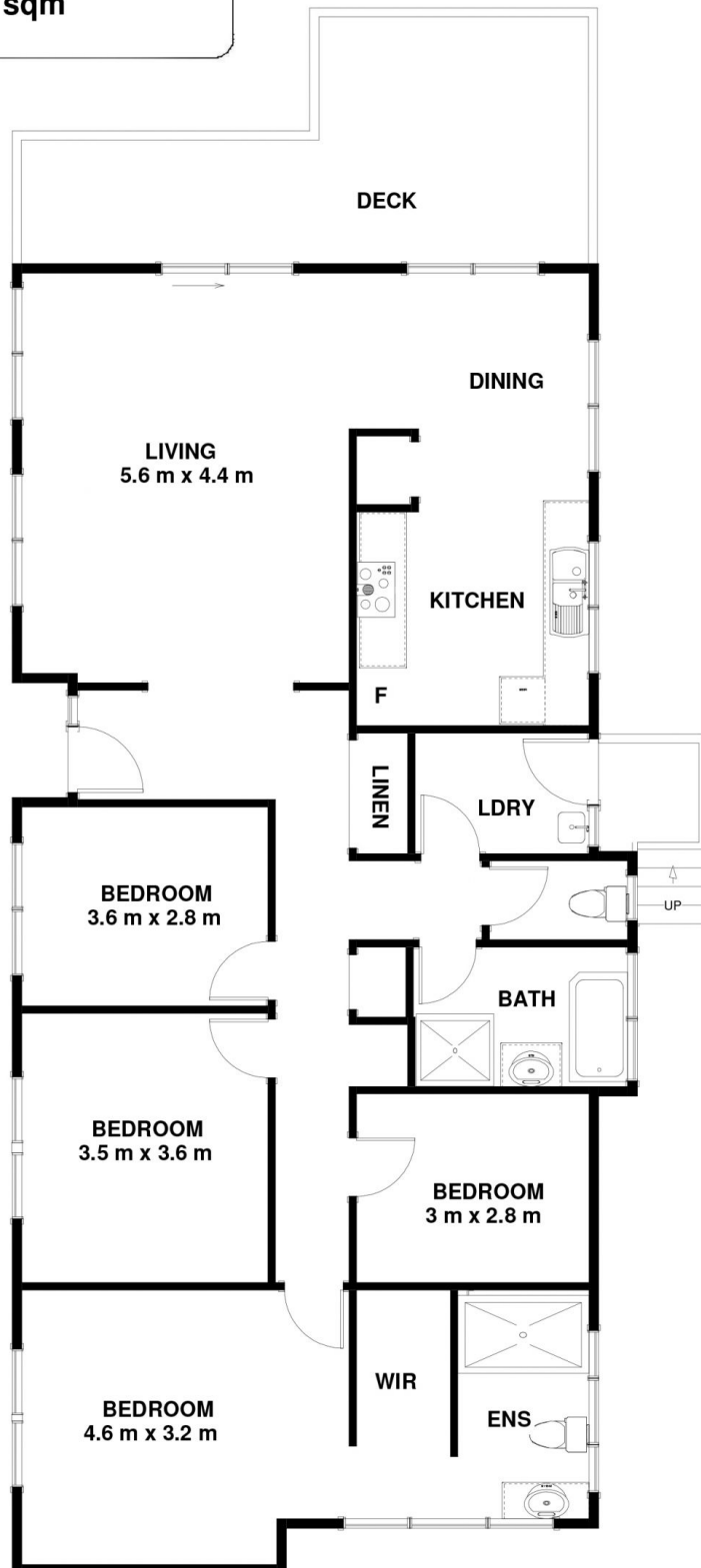


John Lennard
6169 2555



Johnnie Lennard
6169 2555

591 Nelson Rd Mount Nelson TAS 7007
Approx Internal Space 146 sqm



Disclaimer: All measurements and floor plan details are for informational purposes only. We make no warranties or representations, express or implied, as to the accuracy of this rendering. Independent property size verification is recommended. The approximate internal area measurement does not directly reflect the government evaluation of the property area.