



### 13/56 Adelaide Street South Hobart TAS

1  1  1 

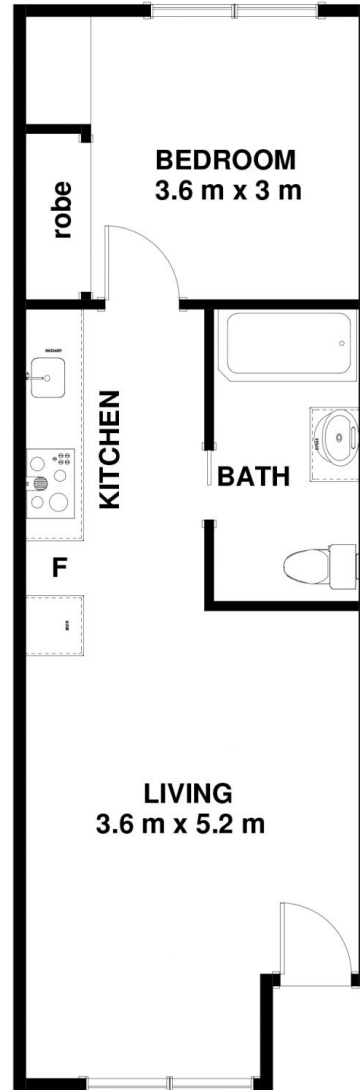
Prime South Hobart location, mountain views, solid brick construction, ultra-sunny, stylish upgrades and designated off-street parking, situated within a short walk of south Hobart village and close to the Hobart CBD. This location will enable easy access to Utas Sandy Bay and the impending city campus.

**Price** : \$ 305,000  
**Building Size** : 46 sqm  
**Land Size** : 43 sqm  
**View** : <https://www.lennardmclure.com.au/sale/tas/hobart-southern/south-hobart/residential/unit/5923870>



**John Lennard**  
6169 2555

**13/56 Adelaide St South Hobart TAS 7004**  
**Approx Internal Space 46 sqm**



**CARPORT**

Disclaimer: All measurements and floor plan details are for informational purposes only. We make no warranties or representations, express or implied, as to the accuracy of this rendering. Independent property size verification is recommended. The approximate internal area measurement does not directly reflect the government evaluation of the property area.