



3/649 Main Road Berriedale TAS

3  2  2 

Occupying a premier waterside locale bordering the Derwent Estuary and Hobart's internationally acclaimed, premier tourist attraction 'Mona'.

This stylish modern 3-bedroom villa (1 of only 3) offers level access, fabulous sun and relative privacy.

The spacious open living area offers direct access to an expansive entertainment deck taking in full and diverse panorama of the Derwent estuary including Mona museum, Bowen bridge and Derwent entertainment centre. All three bedrooms are spacious, with both well located bathrooms boasting a stylish fit out.

This property is close to an array of private and public schools, both primary & secondary. Situated around a 20-minute drive of Hobart's CBD with close highway

Price : \$ 590,000
Building Size : 155 sqm
Land Size : 419 sqm
View : <https://www.lennardmclure.com.au/sale/tas/hobart-southern/berriedale/residential/house/5923873>

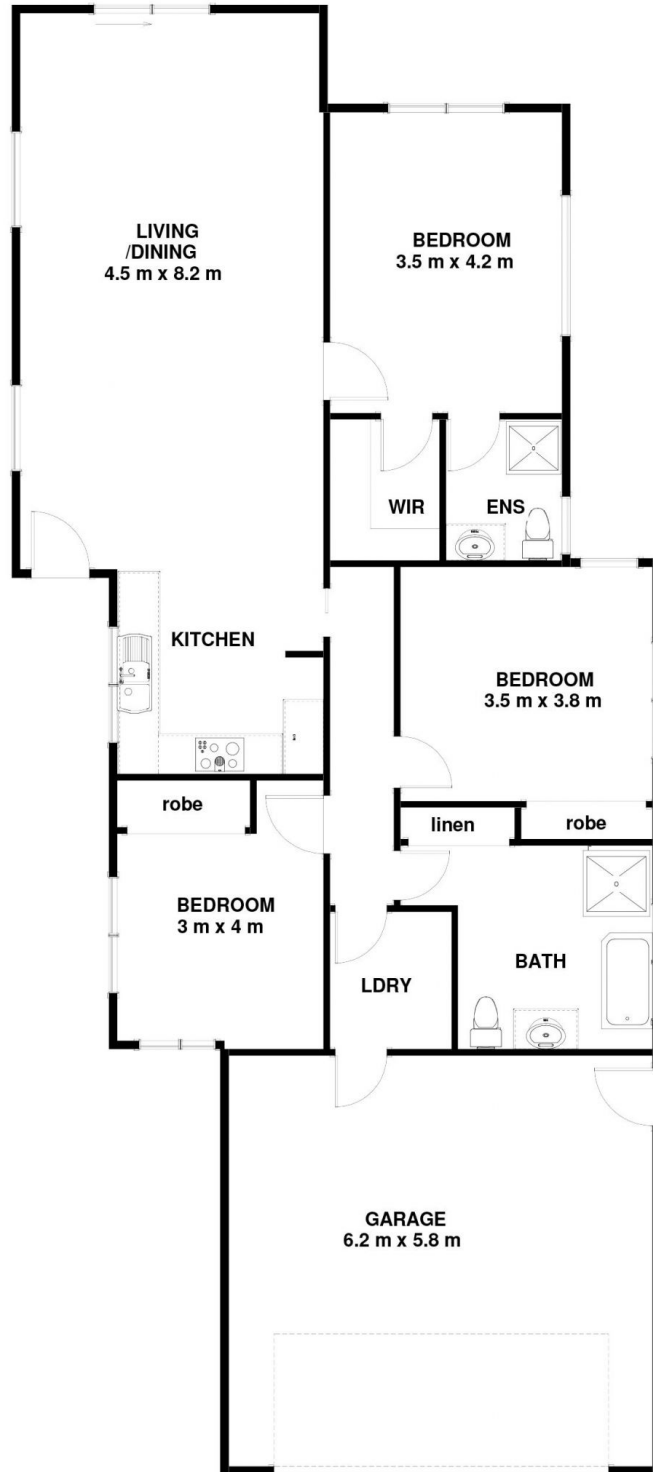


John Lennard
6169 2555



Johnnie Lennard
6169 2555

- U3/649 Main Rd Berriedale TAS 7011
- Approx Internal Space 155 sqm (Inc Garage)



Disclaimer: All measurements and floor plan details are for informational purposes only. We make no warranties or representations, express or implied, as to the accuracy of this rendering. Independent property size verification is recommended. The approximate internal area measurement does not directly reflect the government evaluation of the property area.