

3/34 Loinah Crescent Montagu Bay TAS

2  1  2 

Offering amazing close-up panorama including our picturesque Derwent Estuary, Tasman bridge (front on), Hobart City, the Domain, Historic Government House and so much more, this spacious, low maintenance townhouse boasts a prominent position within its three-home complex.

The downstairs consists of a well-appointed open plan kitchen/dining flowing beautifully to the spacious living room with an internally accessed garage, 2nd w/c and laundry are all found on this level.

Upstairs offers comprehensive bathroom and two good size bedrooms, the master complete with walk-in robe. This level also boasts the best of the extraordinary panorama on offer.

Surprisingly for an elevated location this home enjoys a

Price : \$ 405,000
Building Size : 120 sqm
Land Size : 290 sqm
View : <https://www.lennardmclure.com.au/sale/tas/hobart-southern/montagu-bay/residential/unit/5923874>

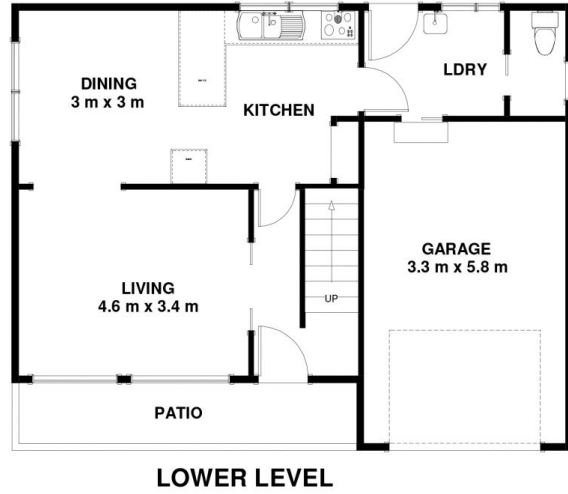


John Lennard
6169 2555



Johnnie Lennard
6169 2555

3/34 Loinah Cres Montagu Bay TAS 7018
Approx Internal Space 120 sqm (inc Garage)



Disclaimer: All measurements and floor plan details are for informational purposes only. We make no warranties or representations, express or implied, as to the accuracy of this rendering. Independent property size verification is recommended. The approximate internal area measurement does not directly reflect the government evaluation of the property area.