



6 Suande Place Kingston TAS

3  1  2 

Well located within a close proximity of the Kingston shopping precinct, an array of public and private schools, food outlets and services, this low maintenance property will ideally suit first home buyers, retirees and investors.

The home itself consists of 3 bedrooms, all with robes, an extremely spacious open living area, separate bathroom, w/c and laundry.

Well situated in a sunny quiet no-through street with a generous proportioned allotment, ideal for further improvements such a green house, garage/workshop or an extension S.T.C.A.

Single level low maintenance brick veneer homes such a this, in one of Hobarts most vibrant suburbs, priced competitively in such a challenging price range don't last

Price : \$ 456,000
Building Size : 116 sqm
Land Size : 756 sqm
View : <https://www.lennardmclure.com.au/sale/tas/hobart-southern/kingston/residential/house/5923877>

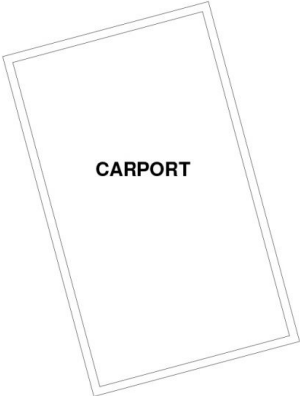
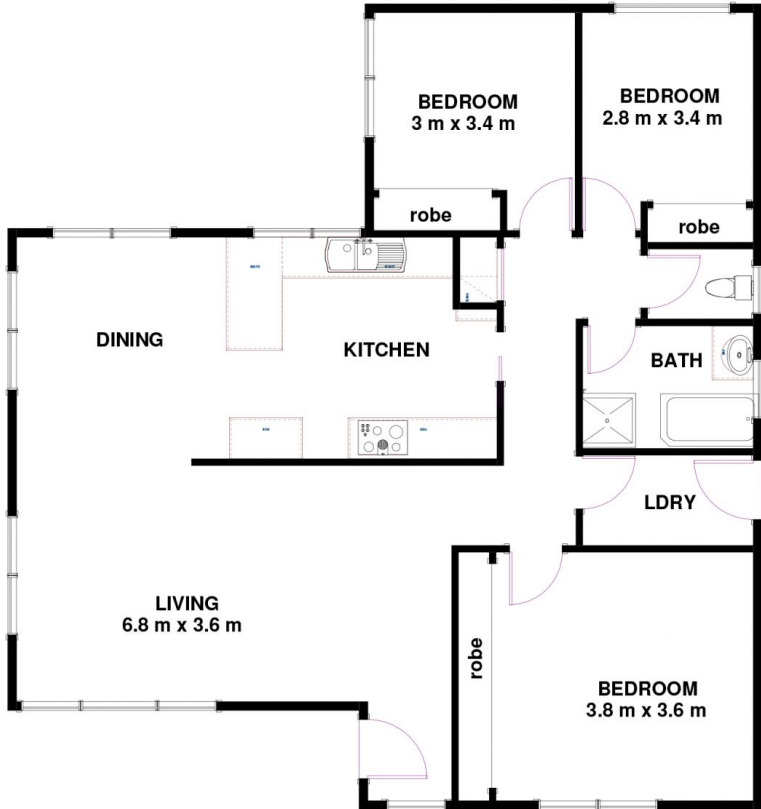
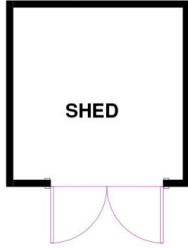


John Lennard
6169 2555



Johnnie Lennard
6169 2555

6 Suande Pl, Kingston TAS 7050
Approx Internal Space 116 sqm



Disclaimer: All measurements and floor plan details are for informational purposes only. We make no warranties or representations, express or implied, as to the accuracy of this rendering. Independent property size verification is recommended. The approximate internal area measurement does not directly reflect the government evaluation of the property area.