

#### 4 Beddome Street Sandy Bay TAS

4  3  2 

Originally constructed in the late 1950s and maintaining much of the stately period features and charm from that era, this home has been meticulously renovated to a supreme standard over the past 12 years by its current owners with no expense spared to achieve a liveable family lifestyle home.

Benefitting from unsurpassed, close-up views of the Derwent Estuary, Wrest Point Casino and Derwent Bridge, with Hobart's CBD, the Marina, Sandy Bay beach, Blundstone Arena and many western and eastern shore suburbs all in full view.

The Entry-level offers four open adjoining living areas which consist of an amazing kitchen with European appliances and marble-topped benches, an exquisite dining area, beautiful living room and family space. This area alone would be an equivalent size of many three-bedroom homes. Accessed via a grand entrance complete with

**Price** : \$ 1,700,000  
**Building Size** : 359 sqm  
**Land Size** : 673 sqm  
**View** : <https://www.lennardmclure.com.au/sale/tas/hobart-southern/sandy-bay/residential/house/5923878>

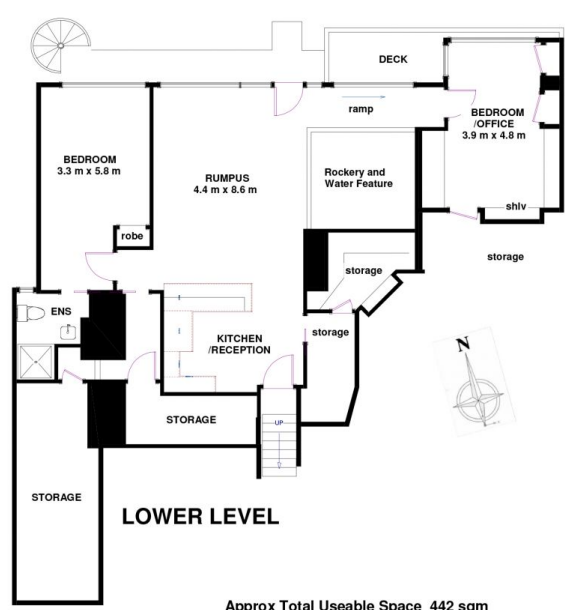
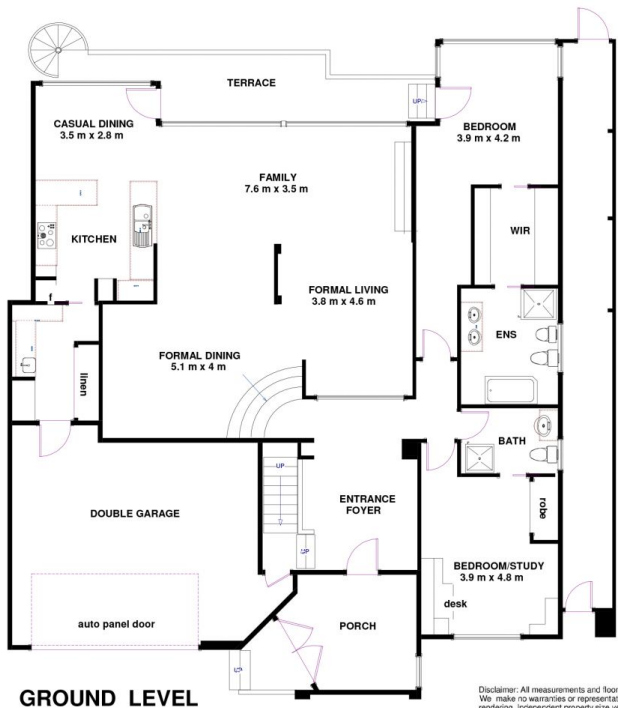


**John Lennard**  
6169 2555



**Johnnie Lennard**  
6169 2555

4 Beddome St Sandy Bay TAS 7005



Approx Total Useable Space 442 sqm  
 Approx Internal Space 330 sqm  
 Approx Garage Space 44 sqm  
 Approx Storerooms 46 sqm  
 Approx Deck 5 sqm  
 Approx Terrace 17 sqm 330 sqm

Disclaimer: All measurements and floor plan details are for informational purposes only. We make no warranties or representations, express or implied, as to the accuracy of this rendering. Independent property size verification is recommended. The approximate internal area measurement does not directly reflect the government evaluation of the property area.