



1/5 Castlereagh Court Lenah Valley TAS

2  1  1 

Located in a quiet cul-de-sac, this ultra-expansive, double brick, 105m², the downstairs apartment offers 2 huge bedrooms, spacious open living areas, extra-large bathroom/laundry, separate w/c and undercover parking. The amazing panorama on offer takes in Mount Wellington, Derwent Estuary, Cadburys chocolate factory, an array of Eastern and Western shore suburbs plus rural landscape.

This property offers an ideal entry-level for those seeking a first home or investment property within a highly sought Hobart city council administered suburb.

Price : \$ 330,000
Building Size : 105 sqm
Land Size : 112 sqm
View : <https://www.lennardmclure.com.au/sale/tas/hobart-southern/lenah-valley/residential/apartment/5923882>

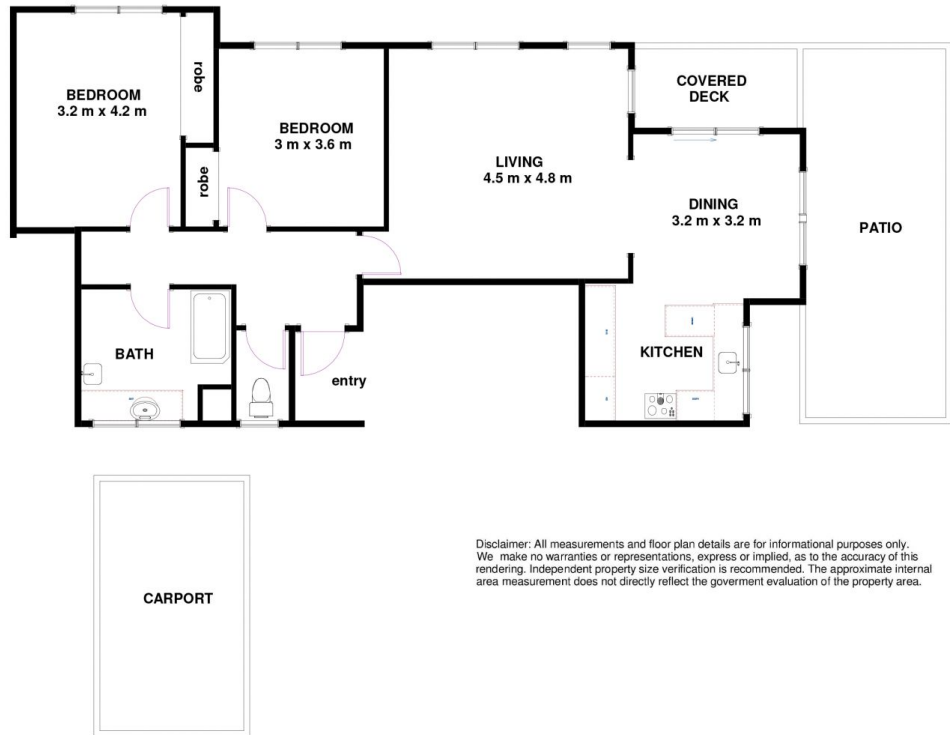


John Lennard
6169 2555



Johnnie Lennard
6169 2555

1/5 Castlereagh Ct Lenah Valley TAS 7008
Approx Internal Space 105 sqm



Disclaimer: All measurements and floor plan details are for informational purposes only. We make no warranties or representations, express or implied, as to the accuracy of this rendering. Independent property size verification is recommended. The approximate internal area measurement does not directly reflect the government evaluation of the property area.