



11 Sunlea Place Glenorchy TAS

3  1  2 

This delightful three-bedroom family home sits on a sunny near level block in a quiet cul-de-sac. Set amongst a well-established garden that includes many fruit trees and a raspberry patch.

The home offers an open plan lounge, dining and kitchen plus three inviting bedrooms and for winter comfort there are two heat pumps.

For additional living space there are two covered decks, plus a covered utility porch off the laundry. The rear yard offers a safe area for children and pets, the three garden sheds and the double colorbond garage offer great space for storage or as workshop spaces or secure parking for two vehicles.

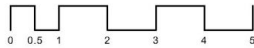
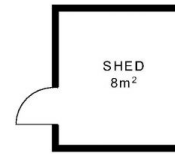
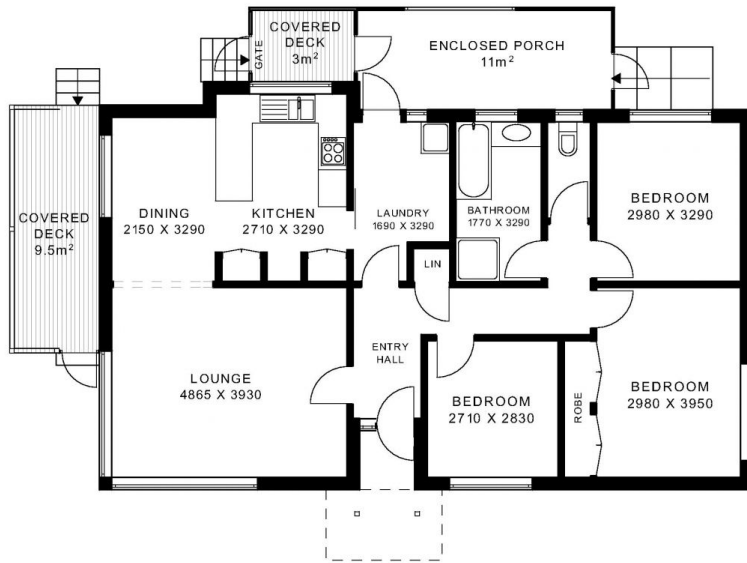
Sunlea Place is a few minutes stroll to regular public

Price : \$ 400,000
Building Size : 106 sqm
Land Size : 589 sqm
View : <https://www.lennardmclure.com.au/sale/tas/hobart-southern/glenorchy/residential/house/5923892>



Debbie Burgess
6169 2555

GLENORCHY
11 SUNLEA PLS
HOUSE AREA: 104.5m² (11.24 sq)



IMPORTANT: measurements are approximate-interested parties need to verify

NOTE: SHED LOCATION DOES NOT REFLECT ACTUAL LOCATION