






65 Sinclair Avenue Moonah TAS

3  1  3 

Occupying a commanding cul-da-sac position within one of Moonahs most sought streets, this impressive home has undergone many recent upgrades. The modern kitchen flows to two expansive open living areas, both benefitting from amazing panoramic views taking in up to ten Eastern and Western shore suburbs plus our beautiful Derwent estuary. Entry levels also benefit from a well situated concrete deck, upgraded bathrooms, separate w/c and laundry.

The area underneath area boasts a spacious garage, expansive rumpus room, second w/c, under stair storage and 2 utility rooms, one of which may well be suitable for a transformation to a second bathroom.

The location itself is within a few minutes driving of Moonahs central business districts, close to a host of

Price : \$ 640,000
Building Size : 137 sqm
Land Size : 655 sqm
View : <https://www.lennardmclure.com.au/sale/tas/hobart-southern/moonah/residential/house/5923899>

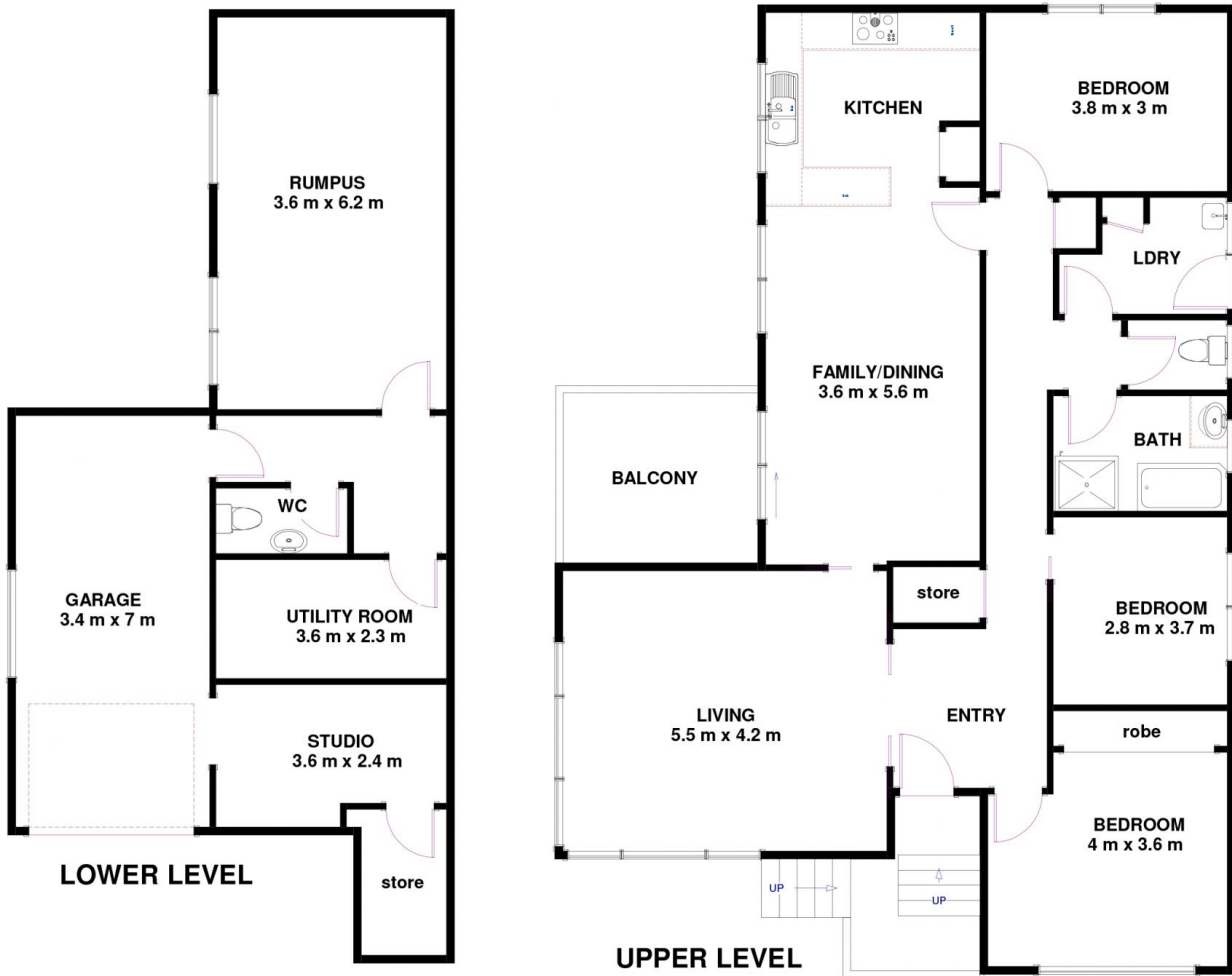


John Lennard
6169 2555



Johnnie Lennard
6169 2555

65 Sinclair Ave Moonah TAS 7009
Approx Internal Space 137 sqm



Disclaimer: All measurements and floor plan details are for informational purposes only. We make no warranties or representations, express or implied, as to the accuracy of this rendering. Independent property size verification is recommended. The approximate internal area measurement does not directly reflect the government evaluation of the property area.