



**26 Binya Street Glenorchy TAS**

4 🛏 2 🚿 2 🚗

This 4-bedroom 2-bathroom brick family home occupies a commanding position within a highly sought enclave of the vibrant suburb of Glenorchy.

Panoramic views are on display from the spacious indoor-outdoor living areas, these include our picturesque Derwent estuary, the Derwent entertainment center and Elwick racecourse plus a diverse array of eastern and western shore suburbs. This property also benefits from a wonderful sunny aspect.

The home itself offers a practical floorplan with 3 spacious bedrooms, expansive living area, eat-in kitchen, separate dining, 2 bathrooms and laundry all on one level. There is an ultra-expansive 4th bedroom/rumpus and garage workshop and 3rd w/c under, all connected by an easily maneuverable internal staircase. A ducted heat pump

**Price** : \$ 485,000  
**Building Size** : 223 sqm  
**Land Size** : 716 sqm  
**View** : <https://www.lennardmclure.com.au/sale/tas/hobart-southern/glenorchy/residential/house/5923904>

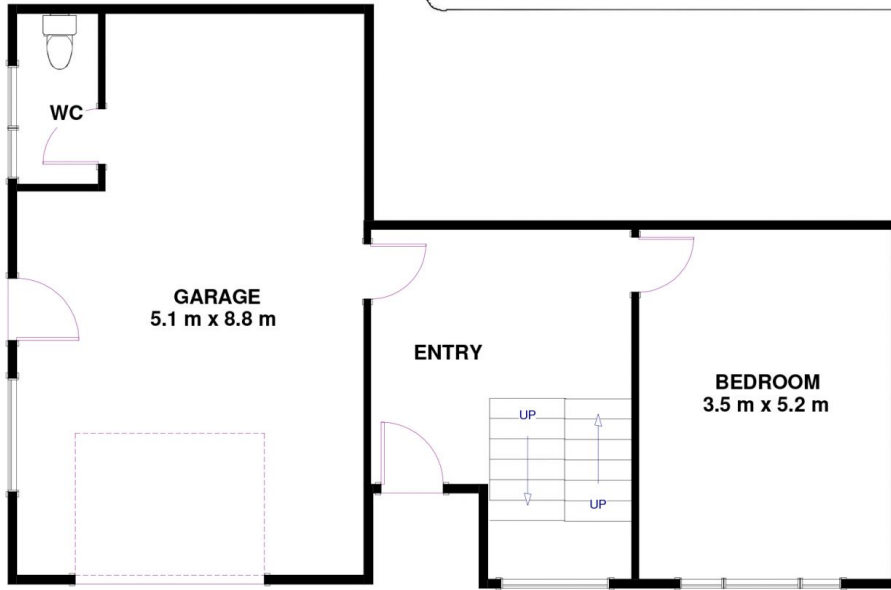


**John Lennard**  
6169 2555

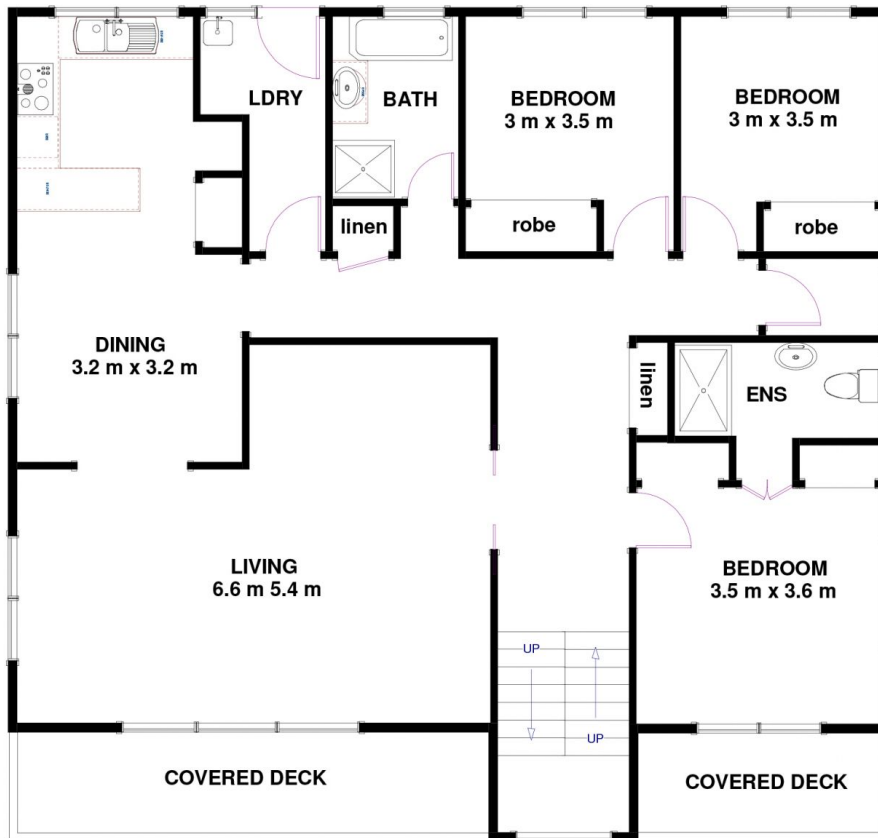


**Johnnie Lennard**  
6169 2555

26 Binya St Glenorchy TAS 7010  
Approx Internal Spac 223 sqm (Inc Garage)



LOWER LEVEL



UPPER LEVEL

Disclaimer: All measurements and floor plan details are for informational purposes only. We make no warranties or representations, express or implied, as to the accuracy of this rendering. Independent property size verification is recommended. The approximate internal area measurement does not directly reflect the government evaluation of the property area.