






11 Shenstone Place Montrose TAS

5  2  4 

This property offers a unique opportunity to purchase an expansive 5-bedroom, 2-bathroom family home set on a land parcel that equates to approximately 4 to 5 standard sized land allotments.

This classic 1936, one level, period homestead offers 2 ultra-spacious perfectly positioned north facing adjoining living areas bathed in sunlight, taking in expansive views over the substantial near level grounds, with close-up Derwent estuary vista on offer. The European appliances eat-in kitchen boasts an exotic Huon Pine benchtop which blends perfectly with the exotic timber work throughout the home, including fabulous period doors, windows and flooring.

All bedrooms are double, the master complete with ensuite. A second bathroom, study and laundry complete the home.

Price : \$ 850,000
Building Size : 251 sqm
Land Size : 2744 sqm
View : <https://www.lennardmclure.com.au/sale/tas/hobart-southern/montrose/residential/house/5923905>

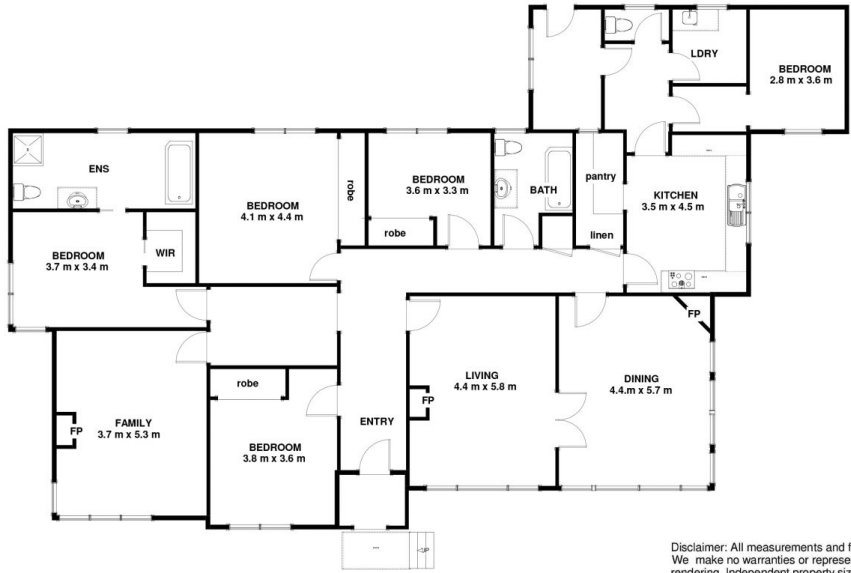
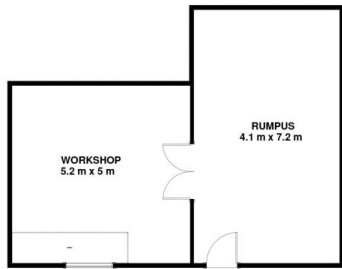


John Lennard
6169 2555



Johnnie Lennard
6169 2555

11 Shenstone Place Montrose Tas 7010
Approx Internal Space 251 sqm
Approx Space Garage 62 sqm



Disclaimer: All measurements and floor plan details are for informational purposes only. We make no warranties or representations, express or implied, as to the accuracy of this rendering. Independent property size verification is recommended. The approximate internal area measurement does not directly reflect the government evaluation of the property area.