

36 Pirie Street New Town TAS

2  1  4 

Located within a highly sought precinct of prestigious East New Town. This home is situated within walking distance of an array of both private and public schools, including The Friends School, Sacred Heart College, Ogilvie, New Town Primary and high schools. Two major supermarkets, transport and most services are very close by.

Price : \$ 675,000
Building Size : 109 sqm
Land Size : 650 sqm
View : <https://www.lennardmclure.com.au/sale/tas/hobart-southern/new-town/residential/house/5923917>

This one level, extremely sunny, easily accessed home has changed hands only once in over eighty years, it is well constructed of double brick with a host of original features still in place, including spectacular art deco period front doors, hardwood floors, architraves and original period exotic timber windows.

Built as a three-bedroom home this property now offers 2 ultra-expansive bedrooms, with the third opened up to add

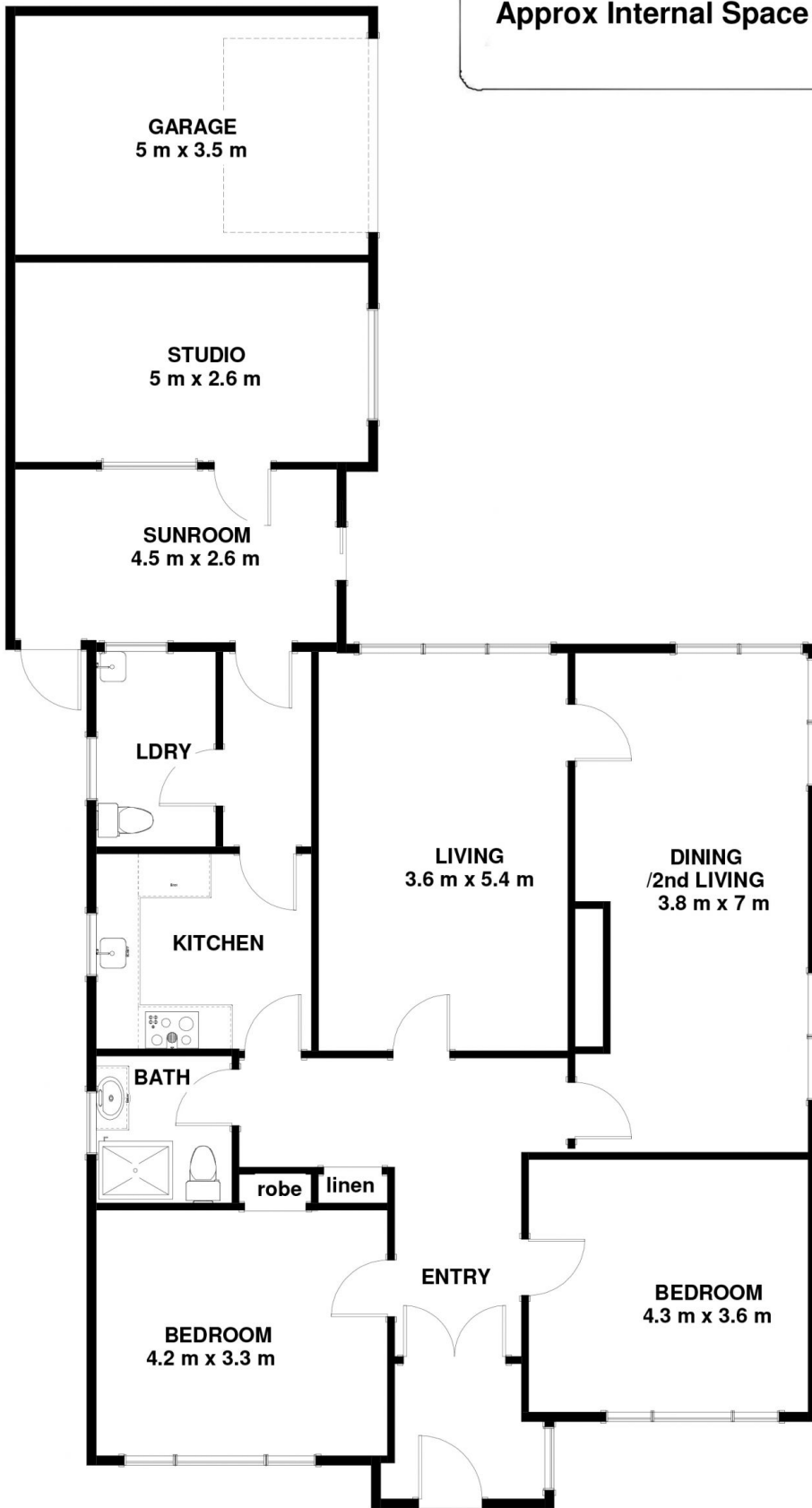


John Lennard
6169 2555



Johnnie Lennard
6169 2555

36 Pirie Street New Town Tas 7008
Approx Internal Space 109 sqm



Disclaimer: All measurements and floor plan details are for informational purposes only. We make no warranties or representations, express or implied, as to the accuracy of this rendering. Independent property size verification is recommended. The approximate internal area measurement does not directly reflect the government evaluation of the property area.