



### 7 Riseley Court Lenah Valley TAS

5  2  3 

Situated in a quiet cul-de-sac within the highly sought suburb on Lenah Valley, this home offers so much more than its street appeal suggests.

With a size of some 224m<sup>2</sup> plus garage and workshop with up to 6 bedrooms if required, multiple indoor and outdoor living area, all within a close proximity of an expansive granite bench topped eat in kitchen and spacious open dining room.

The ultra-palatial master bedroom suite boasts fabulous Derwent Estuary views over a host of surrounding suburbs, in fact diverse vista is on full view from most areas of this home, with living areas enjoying bold mountain vista and fabulous sunshine through the many well located windows and glass doors on offer, all of cutting edge design for this vintage.

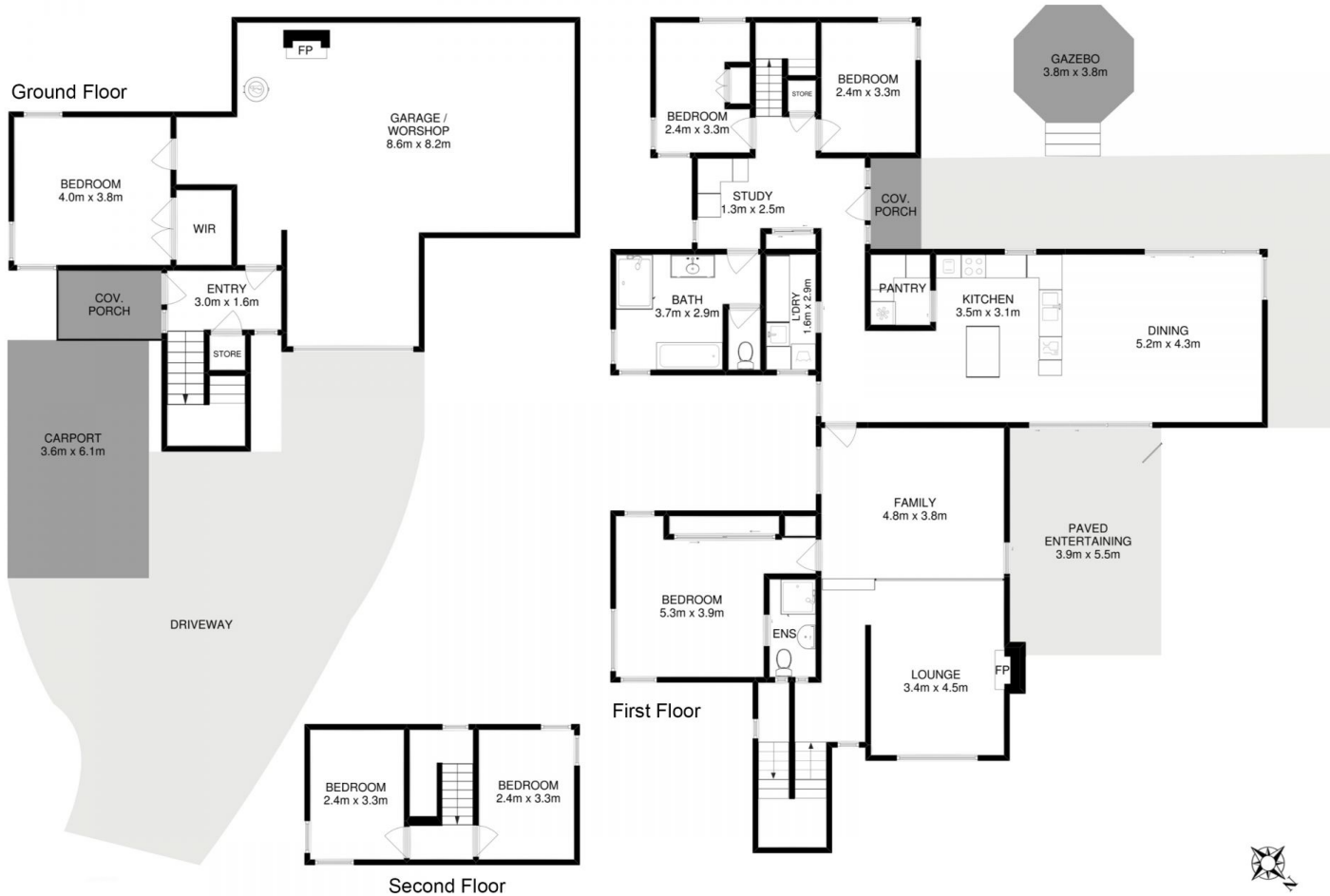
**Price** : \$ 675,000  
**Building Size** : 244 sqm  
**Land Size** : 655 sqm  
**View** : <https://www.lennardmclure.com.au/sale/tas/hobart-southern/lenah-valley/residential/house/5923926>



**John Lennard**  
6169 2555



**Johnnie Lennard**  
6169 2555



Total Approx. Floor Area (inc. Garage) : 302 sqm

All measurements are internal and approximate.  
This plan is a sketch for illustration, not valuation.  
Produced by Open2view.com