






12 Mittara Crescent Berriedale TAS

3  1  3 

This exceptionally well located, 1960's-character home, features level access and a fantastic floorplan. Complete with a beautiful frontage, private and sunny enclosed backyard along with a wealth of recent, important upgrades. This property will ideally suit first home buyers or astute investors.

The floorplan, which offers three spacious bedrooms, is functional and open. The sunny kitchen and large living area ultimately lead to a substantial, level yard, ideal for children at play and pets.

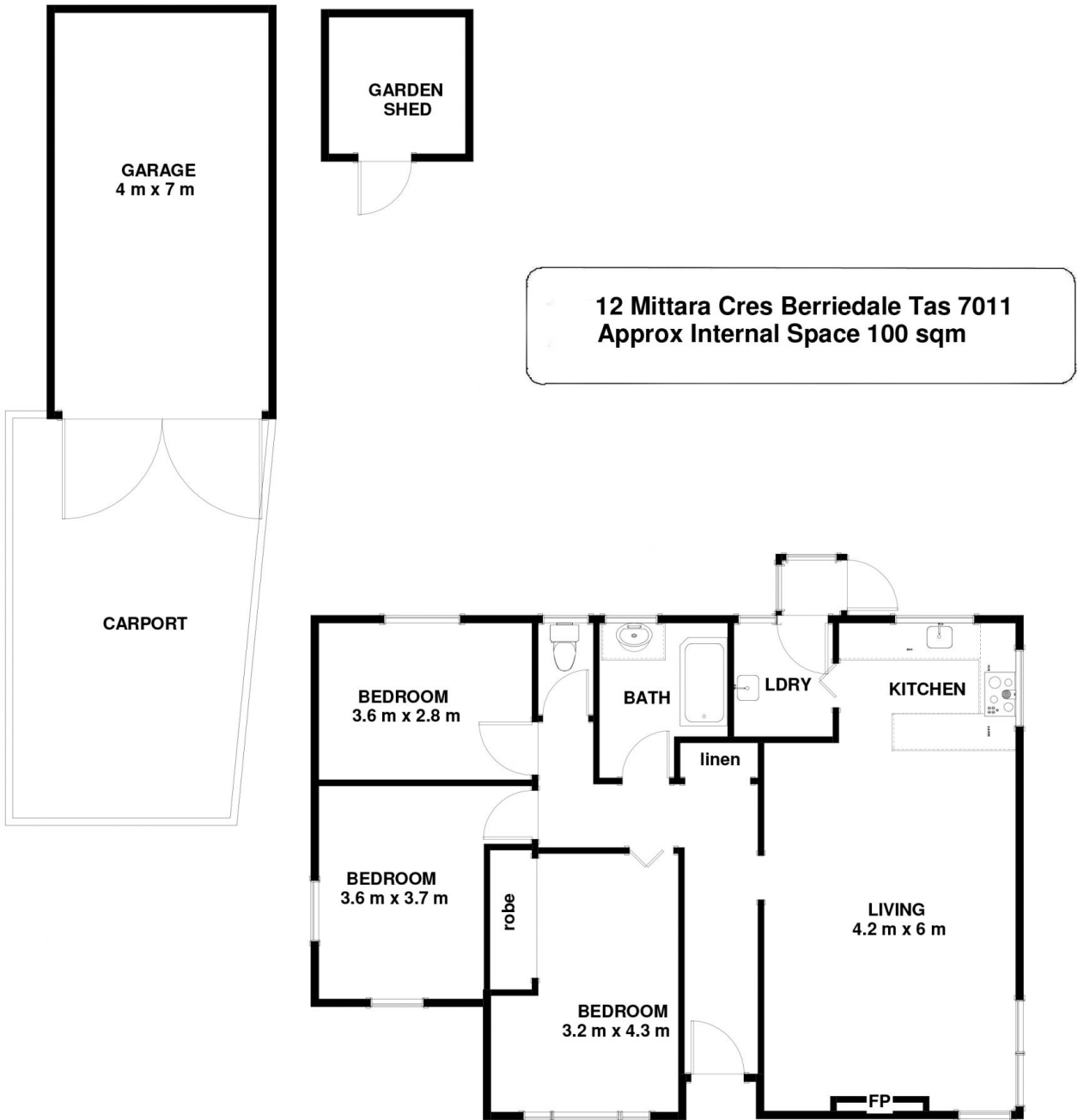
This home has received recent upgrades, such as wiring, a new roof and a steel fence line to name just a few.

The location itself benefits from being so close to a host of shops, services and amenities as well as public and private

Price : \$ 405,000
Building Size : 100 sqm
Land Size : 610 sqm
View : <https://www.lennardmclure.com.au/sale/tas/hobart-southern/berriedale/residential/house/5937793>



Johnnie Lennard
6169 2555



Disclaimer: All measurements and floor plan details are for informational purposes only. We make no warranties or representations, express or implied, as to the accuracy of this rendering. Independent property size verification is recommended. The approximate internal area measurement does not directly reflect the government evaluation of the property area.