



16/320 Davey Street South Hobart TAS

2  1  1 

This generously proportioned city fringe apartment offers an ultra-convenient location.

Situated within minutes of south Hobart village and within a scenic walking distance of both Hobart's CBD and sandy bays business district.

This properties location within its very well-maintained complex is seen as prime both bedrooms are spacious as in the living room, the kitchen has been upgraded and designated undercover parking is very close at hand.

The views on offer are superb, taking in the Derwent Estuary, Wrest Point Casino, Nutgrove beach within Marina and an array of both Eastern and Western shore suburbs. Are in full view

Price : \$ 450,000
Building Size : 77 sqm
Land Size : 77 sqm
View : <https://www.lennardmclure.com.au/sale/tas/hobart-southern/south-hobart/residential/apartment/6101351>



John Lennard
6169 2555

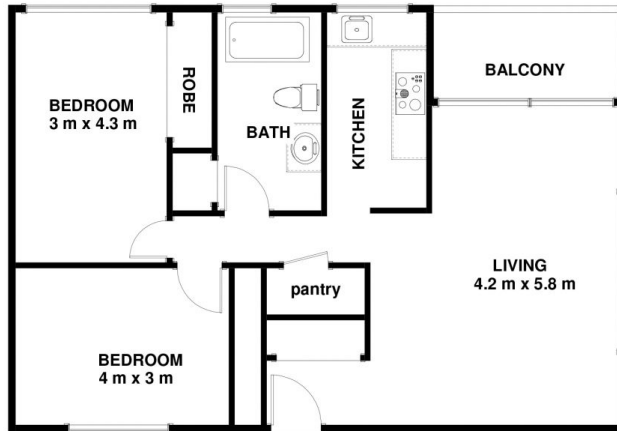


Johnnie Lennard
6169 2555

16/320 Davey Street South Hobart Tas 7004
Approx Internal Space 80 sqm



NOT IN POSITION



Disclaimer: All measurements and floor plan details are for informational purposes only.
We make no warranties or representations, express or implied, as to the accuracy of this rendering. Independent property size verification is recommended. The approximate internal area measurement does not directly reflect the government evaluation of the property area.