

1/32 Mortimer Avenue Mount Stuart TAS

3  2  2 

This stylish home is exceptionally well located occupying such a prominent position within such an exclusive enclave of Mount Stuart.

This Mount Stuart location is within around 200 meters of thriving North Hobart restaurant strip and very close to Hobarts CBD itself. In general, this suburb offers views or sun, this property has both in spades.

The adjoining spacious and ultra-voguish living areas flow from North West to South East with extraordinary close-up world-class views of the Hobarts C.B.D, Derwent estuary and a host of both Western and Eastern Shore suburbs in full focus.

The home itself boasts an impressive street appeal and architecturally striking, expansive interior design with many

Price : \$ 910,000
Building Size : 164 sqm
Land Size : 303 sqm
View : <https://www.lennardmclure.com.au/sale/tas/hobart-southern/mount-stuart/residential/house/6651297>

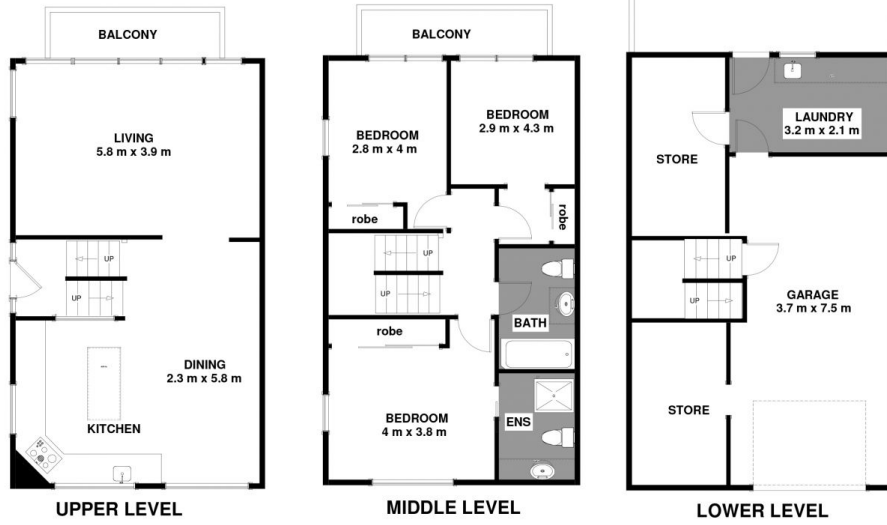


John Lennard
6169 2555



Johnnie Lennard
6169 2555

1/32 Mortimer Avenue Mount Stuart Tas 7000
Approx Internal Space 176 sqm



Disclaimer: All measurements and floor plan details are for informational purposes only.
We make no warranties or representations, express or implied, as to the accuracy of this
rendering. Independent property size verification is recommended. The approximate internal
area measurement does not directly reflect the government evaluation of the property area.