



12 Kinarra Crescent Chigwell TAS

3  1  2 

This solid 1960's two owner home offers a striking street appeal and is well situated within what is such a highly regarded street in this suburb.

This home boasts many original period features such as exotic timber cabinetry inlays, quality joinery work, hardwood floors and period fire surrounds. All windows are well located for light and views, with sensational vista on offer. The Derwent Estuary, Mona Museum, both Tasman and bowen bridges, Cadbury chocolate factory, Mount Direction and Otago Bay are all in full focus, with Mt Wellington in the background.

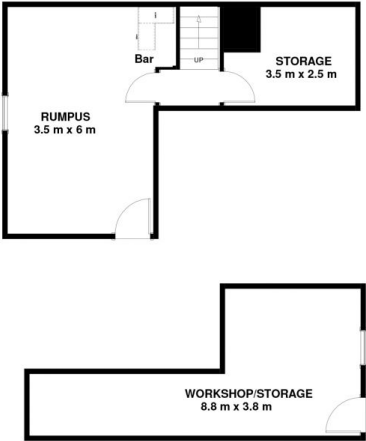
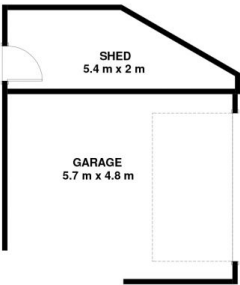
The open plan kitchen living area is spacious as are all three bedrooms. The expansive formal lounge, downstairs rumpus, workshop and storage areas make this home perfect for growing family requirements. The secure

Price : \$ 712,000
Land Size : 658 sqm
View : <https://www.lennardmclure.com.au/sale/tas/hobart-southern/chigwell/residential/house/6718830>



John Lennard
6169 2555

12 Kinarra Cres Chigwell Tas 7011
Approx Internal Space 175 sqm



Disclaimer: All measurements and floor plan details are for informational purposes only.
We make no warranties or representations, express or implied, as to the accuracy of this rendering. Independent property size verification is recommended. The approximate internal area measurement does not directly reflect the government evaluation of the property area.