



39 Alford Street Howrah TAS

3  1  6 

This 1960's family home offers a commanding street appeal, once inside a warm homely ambience is immediately apparent.

The expansive lounge room opening to a generous-sized dining area and eat-in kitchen all seen as perfectly functional for family lifestyle living, particularly when one considers the extraordinary views on offer. Including, a superb close-up vista of Derwent Estuary, Wentworth Park, Long beach Sandy Bay and an outlook as far afield as Betsy Island.

This home also enjoys a solid build quality synonymous with the AV Jennings Brand, a stalwart brand of 1960s and 1970's Australia.

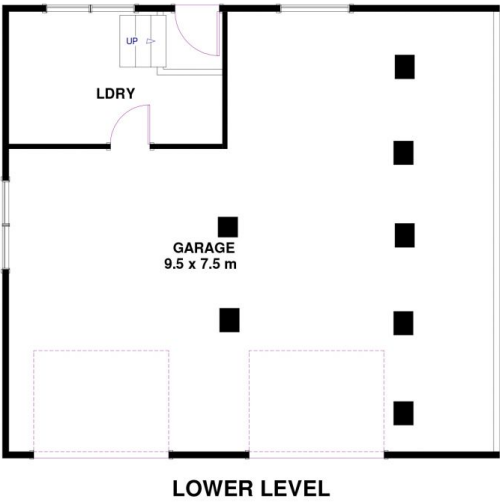
Hardwood oak floors, terracotta tiled roof, ornate ceiling

Building Size : 133 sqm
Land Size : 683 sqm
View : <https://www.lennardmclure.com.au/sale/tas/hobart-southern/howrah/residential/house/6778786>



John Lennard
6169 2555

39 Alford St Howrah TAS 7018
Approx Internal Space 132 sqm



Disclaimer: All measurements and floor plan details are for informational purposes only. We make no warranties or representations, express or implied, as to the accuracy of this rendering. Independent property size verification is recommended. The approximate internal area measurement does not directly reflect the government evaluation of the property area.

