






### 15 Connewarre Crescent Berriedale TAS

4  2  5 

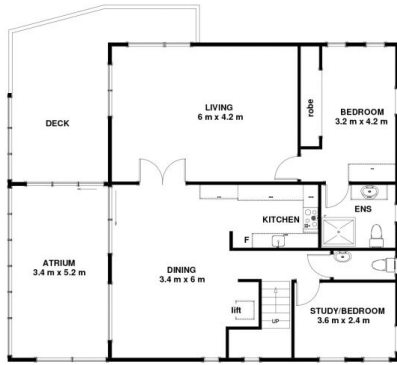
This architecturally striking home offers three super expansive bedrooms plus fourth or study, this plus such amazing ultra-expansive indoor and outdoor living areas over two levels. The unique 1970's architects design will be appreciated by families or individuals seeking a home so different from the normal offering in almost every aspect. This home also benefits from a well-located lift.

The solid double brick construction, cathedral ceilings, quality celery top pine kitchen, 2nd bathroom, powder room and solar panels are all appreciated as ideal for family living. There is also a beautiful well-constructed and superbly maintained swimming pool, double garage and gated off-street parking for at least another three vehicles. Whilst this fabulous home will certainly be admired and appreciated, here it's so much about the location. This property represents an opportunity for one purchaser to secure the chance to enjoy water's edge living, capturing

**Price** : \$ 995,000  
**Building Size** : 206 sqm  
**Land Size** : 802 sqm  
**View** : <https://www.lennardmclure.com.au/sale/tas/hobart-southern/berriedale/residential/house/6891241>



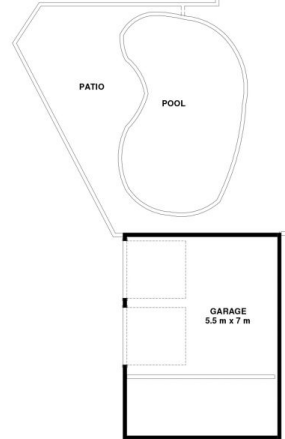
**John Lennard**  
6169 2555



UPPER LEVEL



LOWER LEVEL



Disclaimer: All measurements and floor plan details are for informational purposes only. We make no warranties or representations, express or implied, as to the accuracy of this rendering. Independent property site verification is recommended. The approximate internal area measurement does not directly reflect the government evaluation of the property area.