



**48 Pirie Street New Town TAS**

2  1  2 

Behind the white picket fence you will find a genteel and elegant residence that offers convenience of location, ease of maintenance, security and peace of mind.

Pirie Street is within easy walking distance to a full array of shops, café's and restaurants plus nearby quality primary and secondary schools with the added bonus of being only minutes away from the CBD by car, bike or bus.

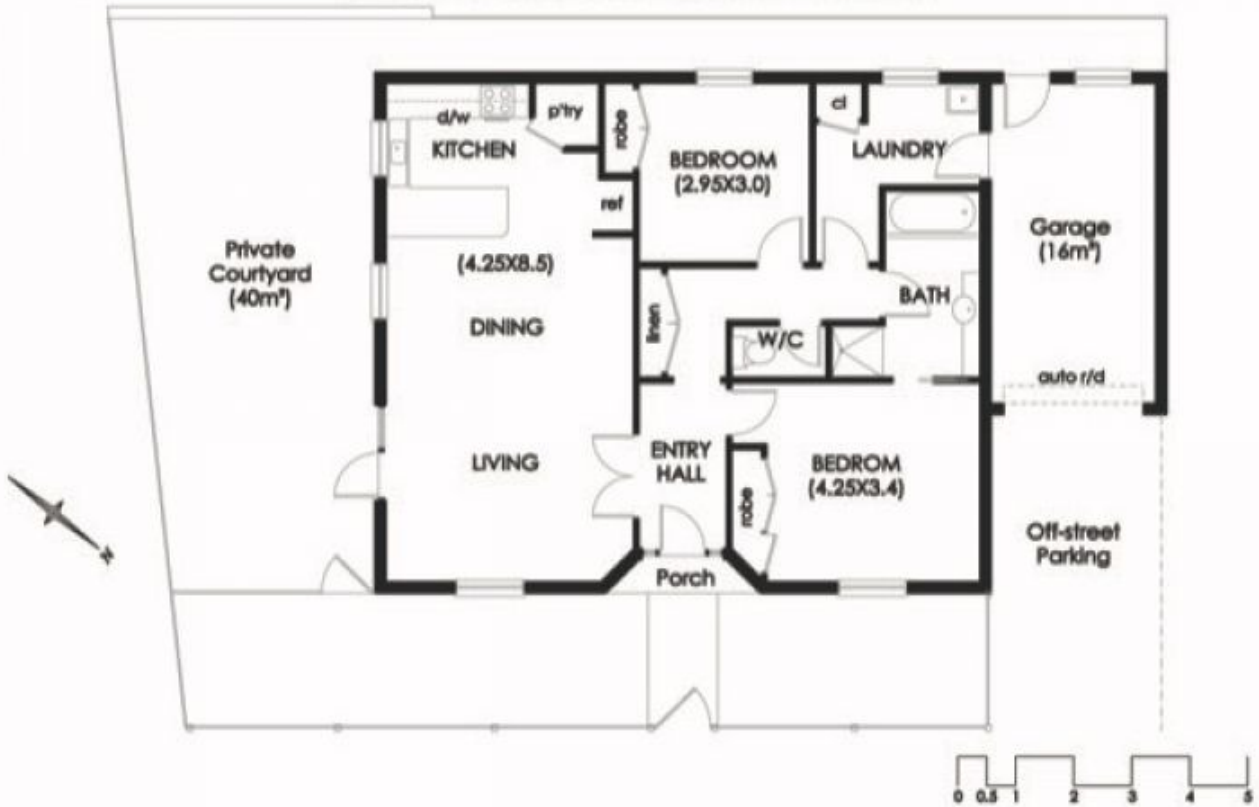
You can either enter the home via the lock up garage behind the security of its electric roller door giving you unseen access to the house through the laundry. Or use the traditional front entrance, which leads you into a

**Building Size** : 112 sqm  
**Land Size** : 201 sqm  
**View** : <https://www.lennardmclure.com.au/sale/tas/hobart-southern/new-town/residential/house/7202547>



**Debbie Burgess**  
**6169 2555**

NEW TOWN  
48 Pirie Street  
House Area (incl Garage): 112m<sup>2</sup>(12sq)



IMPORTANT: measurements are approximate-interested parties need to verify