



29 Giblin Street Lenah Valley TAS

5 🏠 2 🚗 4 🚗

This property hosts a four-bedroom home plus a well separated one bedroom apartment all under on roofline, each tenanted separately with a current rental income exceeding eight hundred dollars per week.

Residential properties with dual incomes this high, within a sensational location at this price point, rarely come to the market, in fact this property last changed hands around thirty years ago.

The location within one of Lenah Valleys most sought-after street is within minutes of the suburbs commercial hub, this includes food supply shops, post office, Whisk eatery, Banjos cafe and a service station.

Some of Hobart's most celebrated private and public schools are nearby with the suburbs of Mount Stuart, New

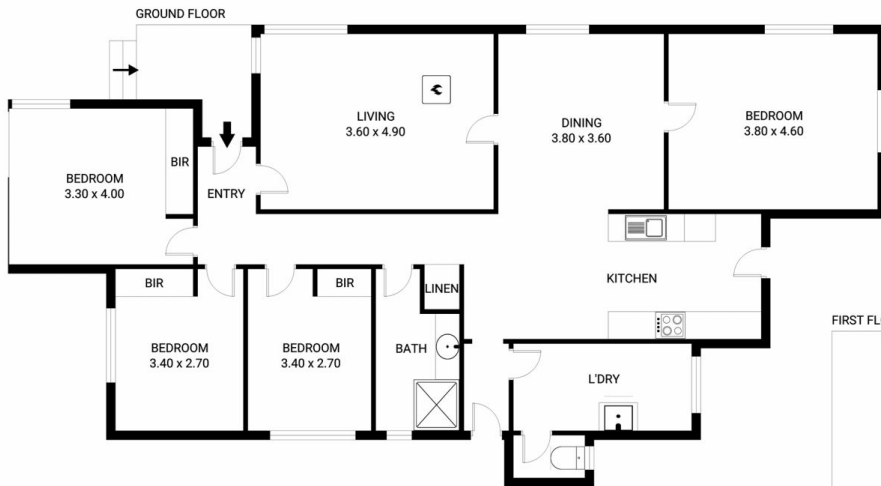
Building Size : 162 sqm
Land Size : 840 sqm
View : <https://www.lennardmclure.com.au/sale/tas/hobart-southern/lenah-valley/residential/house/7404541>



John Lennard
6169 2555



Johnnie Lennard
6169 2555



29 Giblin Street, Lenah Valley
 Total approx. floor area: 162m²

Areas and dimensions are approximate and therefore
 this floor plan should only be used for illustrative purposes.
 Real Estate Marketing by nextcreative.com.au

