



1/32-34 Charles Street Moonah TAS

3  1  1 

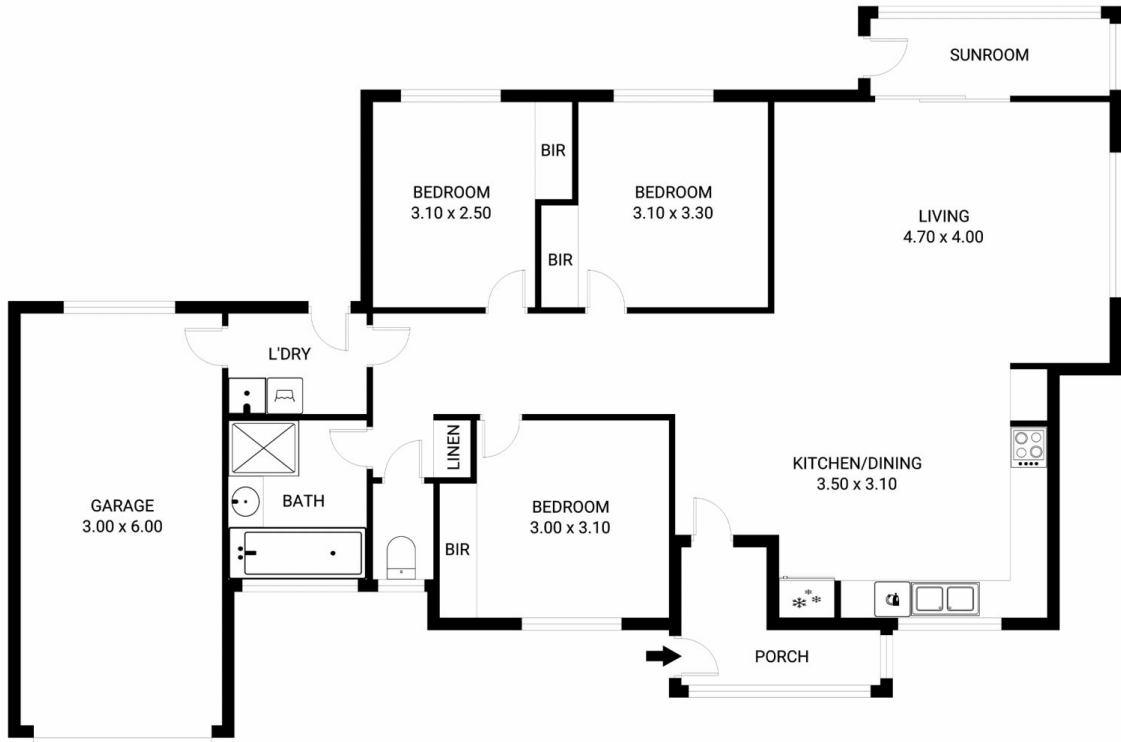
This one level three-bedroom stand-alone villa unit could not be situated in a more convenient location. All services and shopping facilities are within a few minutes strolling distance from the front door. Moonah central which hosts Woolworths supermarket, multiple food outlets, cafes, a liquor store and so much more is within just one hundred and fifty metres from right here, with Harris Scarfe located just across the road.

This property will suit all age groups and most health situations, comprising only one level and very few steps plus a lock up internally accessed garage and visitor parking facilities. There is a paved courtyard with just a tiny section of grass. This home offers a generous living space open to a quality kitchen all facing Northwest, hence capturing all sunshine on offer for most of the day.

Price : \$ 600,000
Building Size : 90.6 sqm
Land Size : 272 sqm
View : <https://www.lennardmclure.com.au/sale/tas/hobart-southern/moonah/residential/unit/7445107>



John Lennard
6169 2555



1/32 Charles Street, Moonah
 Total approx. floor area: 97m²

Areas and dimensions are approximate and therefore this floor plan should only be used for illustrative purposes.
 Real Estate Marketing by nextcreative.com.au

