



24 Lowanna Road Lindisfarne TAS

4  2  2 

This property boasts a prime elevated position within its highly desirable Lindisfarne Street. This location captures amazing views from the Eastern to Western Shore with Derwent Estuary, the Tasman Bridge, Hobarts CBD, Mount Wellington, Wrest Point Casino and a host of suburbs all in full focus from the side balcony. Beautiful panorama of Geilston Bay is also displayed from the main entertainment deck on the North Western face of the home.

At entry level this property hosts three generous bedroom and a spacious open living area with an upgraded bathroom and separate WC. The kitchen is ideally located between levels with the downstairs area also having its own kitchenette, expansive bedroom, living area and bathroom plus storage facilities. The roof has been upgraded to Colorbond with solar panels fitted, wiring has also been upgraded in past years.

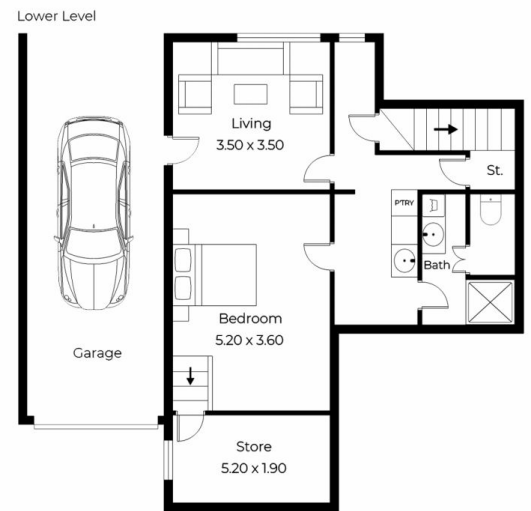
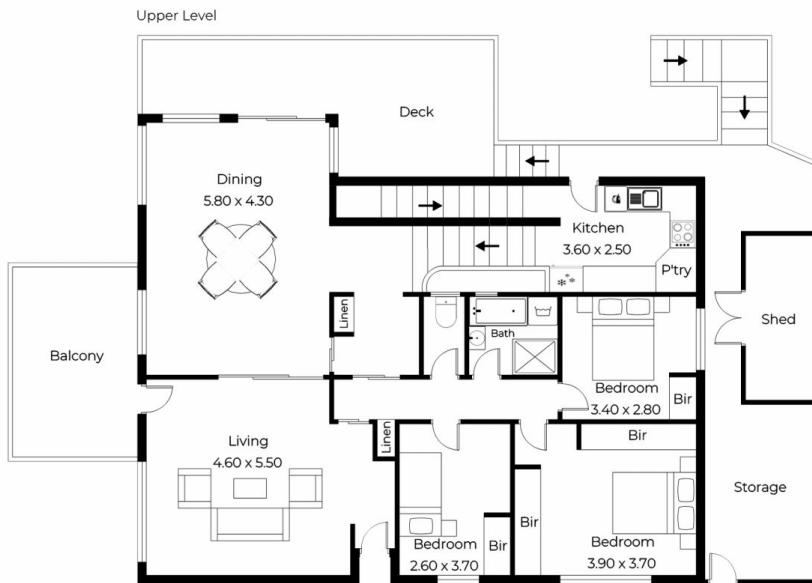
Building Size : 160 sqm
Land Size : 668 sqm
View : <https://www.lennardmclure.com.au/sale/tas/hobart-southern/lindisfarne/residential/house/7523032>



John Lennard
6169 2555



Johnnie Lennard
6169 2555



24 Lowanna Road, Lindisfarne
Total approx. floor area: 186m²

Areas and dimensions are approximate and therefore
this floor plan should only be used for illustrative purposes.

Real Estate Marketing by nextcreative.com.au

