



67 Tasma Street North Hobart TAS

2  1 

If your desire is to live in a vibrant historic precinct of Hobart and enjoy such an extensive diverse range of cuisine and refreshment from all quarters of the globe, without the need for Uber's or taxi's your search is over.

Here at 67 Tasma Street its all about location. Situated across the road from the skate park an around a hundred metres from a boutique brewery and the first of dozens of restaurants, eateries and coffee shops, extending from North Hobart to mid-town and on to the CBD, all within an easy walking distance from the front door. Elizabeth College and the State Theatre are also very close by in different directions.

The home itself boasts an attractive street appeal and is well situated in an artery that hosts a diverse mix of humble period cottages and striking 19th and early 20th century

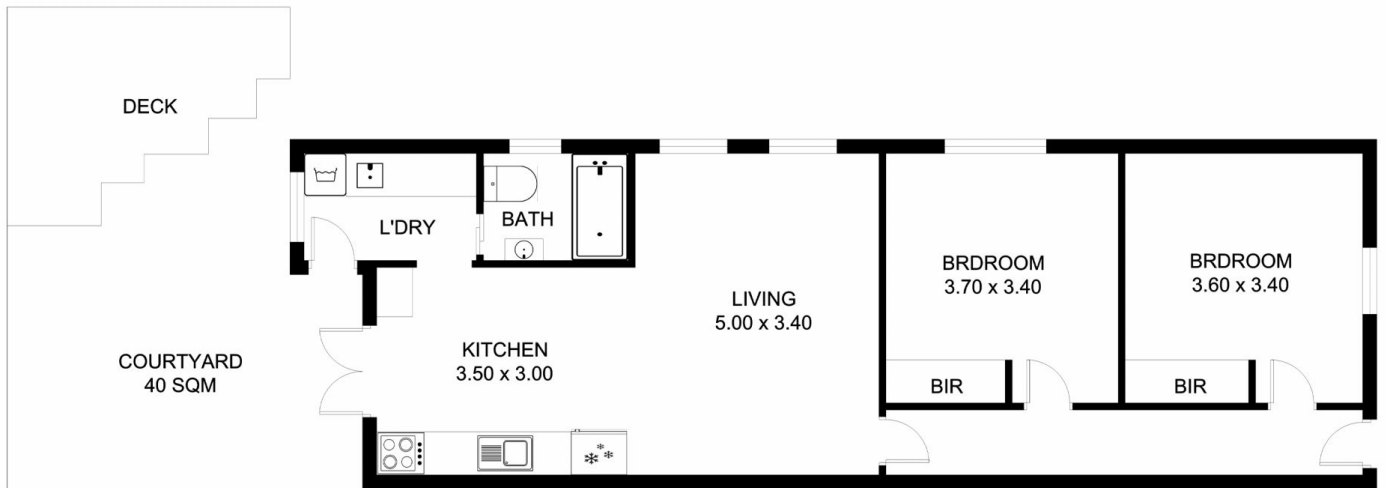
Price : \$ 650,000
Building Size : 66 sqm
Land Size : 84 sqm
View : <https://www.lennardmclure.com.au/sale/tas/hobart-southern/north-hobart/residential/house/7637579>



John Lennard
6169 2555



Johnnie Lennard
6169 2555



67 Tasma Street, North Hobart
Total approx. floor area: 84m²

Areas and dimensions are approximate and therefore
this floor plan should only be used for illustrative purposes.

Real Estate Marketing by nextcreative.com.au

