






13 Jove Court Lindisfarne TAS

4  2  6 

*** Price Reduction ***

This one-owner home is exceptional in every aspect. Craftsmen built with meticulous precision. Here there is perfection in every quarter, from brickwork to polished Tasmanian Oak flooring, ducted reverse cycle air-conditioning and wood heater. A spectacular European appliance kitchen is so well situated and there are two beautiful bathrooms each with a fit-out of exceptional quality. The home's layout hosts multiple adjoining living areas, each flowing to an amazing tiled and glassed outdoor atrium. This area offers one a relaxed serene ambiance.

Three of the four bedrooms on offer boast very generous proportions, the master is complete with walk-in robe and such an expansive ensuite facility.

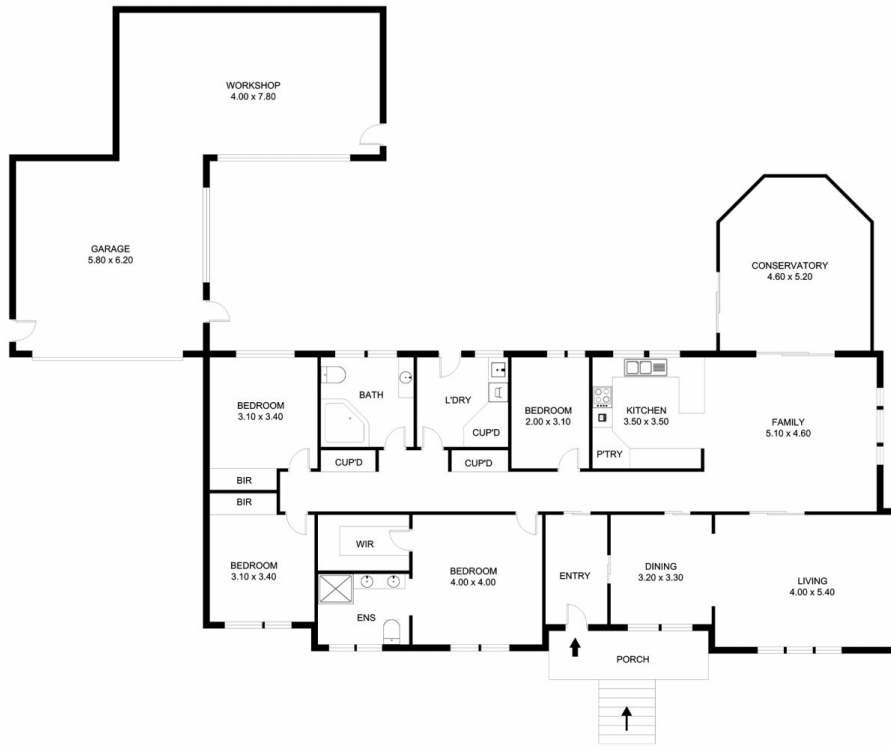
Price : Offers Over \$990,000
Building Size : 183 sqm
Land Size : 1429 sqm
View : <https://www.lennardmclure.com.au/sale/tas/hobart-southern/lindisfarne/residential/house/7656389>



John Lennard
6169 2555



Johnnie Lennard
6169 2555



13 Jove Court, Lindisfarne
 Total approx. floor area: 183m²

Areas and dimensions are approximate and therefore
 this floor plan should only be used for illustrative purposes.
 Real Estate Marketing by nextcreative.com.au

