






3/9 Montgomery Court Sandy Bay TAS

3  1  2 

This pristine townhouse occupies a coveted position within such a tightly held well managed complex.

This property boasts a solid construction, spacious lockup garage and designated second parking space.

Three spacious bedrooms are on offer with the master benefitting from both a two-way bathroom and walk in robe, plus a Juliette balcony. From this room and balcony one can enjoy close-up views of the Derwent Estuary, Wrest Point Casino, marina, Long Beach and old Sandy Bay.

The home has recently benefitted from some quality upgrades including a fabulous, stylish new kitchen, quality carpet fit out and some interior painting. The living area is both private and spacious, leading to a sunny paved courtyard and established easy-care garden.

Price : \$ 980,000
Building Size : 149 sqm
Land Size : 284 sqm
View : <https://www.lennardmclure.com.au/sale/tas/hobart-southern/sandy-bay/residential/unit/7716173>

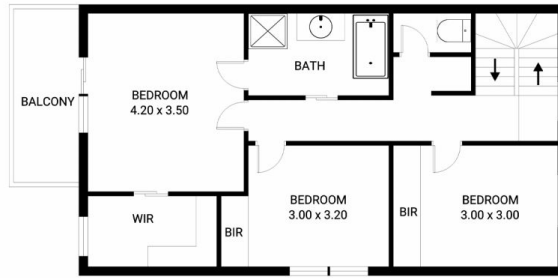


John Lennard
6169 2555



Johnnie Lennard
6169 2555

UPPER LEVEL



LOWER LEVEL



3/9 Montgomery Court, Sandy Bay

Total approx. floor area: 149m²

Areas and dimensions are approximate and therefore this floor plan should only be used for illustrative purposes.

Real Estate Marketing by nextcreative.com.au

