

58 George Street New Norfolk TAS

3  1  1 

"Location! Location! Location!"

And I have to say, this absolutely charming character-filled cottage, circa 1900, has that. In the heart of a fast growing community, it offers many options, with a versatile residential/general business zoning.

As a low maintenance cottage to retire into, it offers comfortable living in a stunning period home. No need to get the car out, or trudge up hill with the shopping. You are within a short stroll, on the flat, to all the requirements you need and the many hidden treasures this amazing town on the picturesque River Derwent, has to offer.

Equally it could be a sound rental property for the astute investor, or indeed an opening for your imaginative niche market business idea in the centre of town.

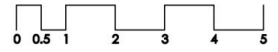
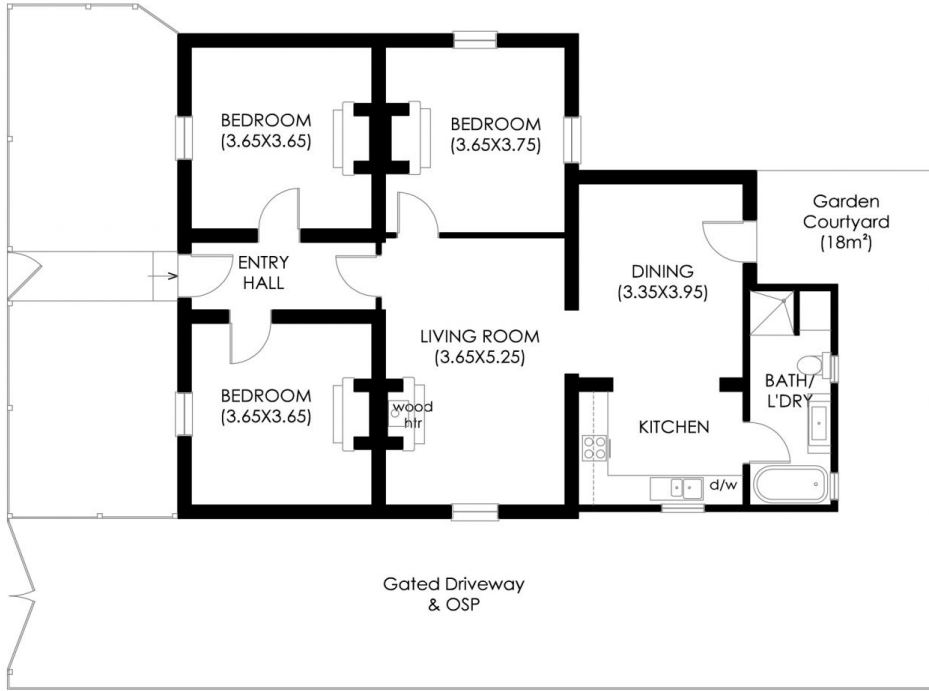
[For full version visit the website](https://www.lennardmclure.com.au)

Type : House
Building Size : 108 sqm
Land Size : 252 sqm
View : <https://www.lennardmclure.com.au/sale/tas/hobart-southern/new-norfolk/residential/house/8142477>



Debbie Burgess
6169 2555

NEW NORFOLK
58 George Street
House Area: 112m²(12sq)



IMPORTANT: measurements are approximate-interested parties need to verify